

# Quick Start Guide pco.edge with CLHS interface

## Setup checklist

### Your computer:

- is equipped with the provided frame grabber (CLHS interface),
- has the latest version of **pco.camware** (or pco.vision™),
- has the latest version of the correct **PCO Driver** installed.

### Your pco.edge CLHS:

- is powered by the provided power supply and power cable and
- is connected to the computer via the provided FOL cable.

**1** Switch on your camera.

**2** Start pco.camware.

**3** Start **Live Preview**.

**4** Right-click, check **Continuous Auto Range**.

**5** If necessary, adjust the **Exposure time**.

**6** Check the image, use your lens or adapter to set the aperture and focus.

**7** Once the object is in focus, end **Live Preview** and click **Record**.



# Quick Start Guide

## pco.edge with CLHS interface

### Hardware setup



**NOTICE:**

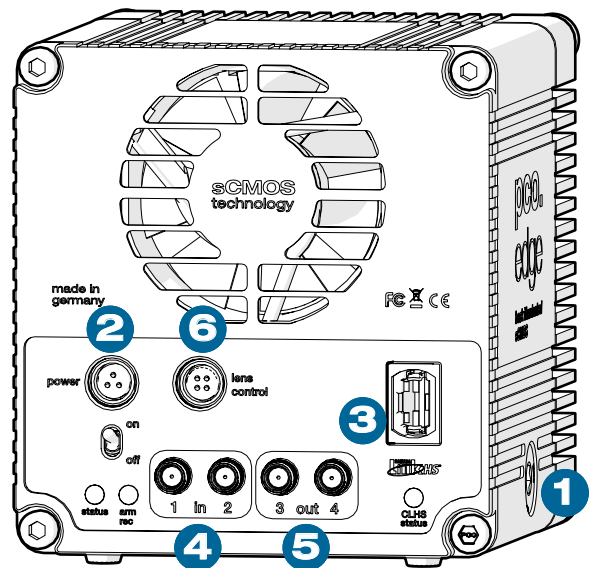
Do not bend, kink, or sharply twist FOL cables. Minimum bend radius: 7.5 mm.  
Do not force connectors. Ensure proper alignment; excessive force may cause damage.

**Essential components:**

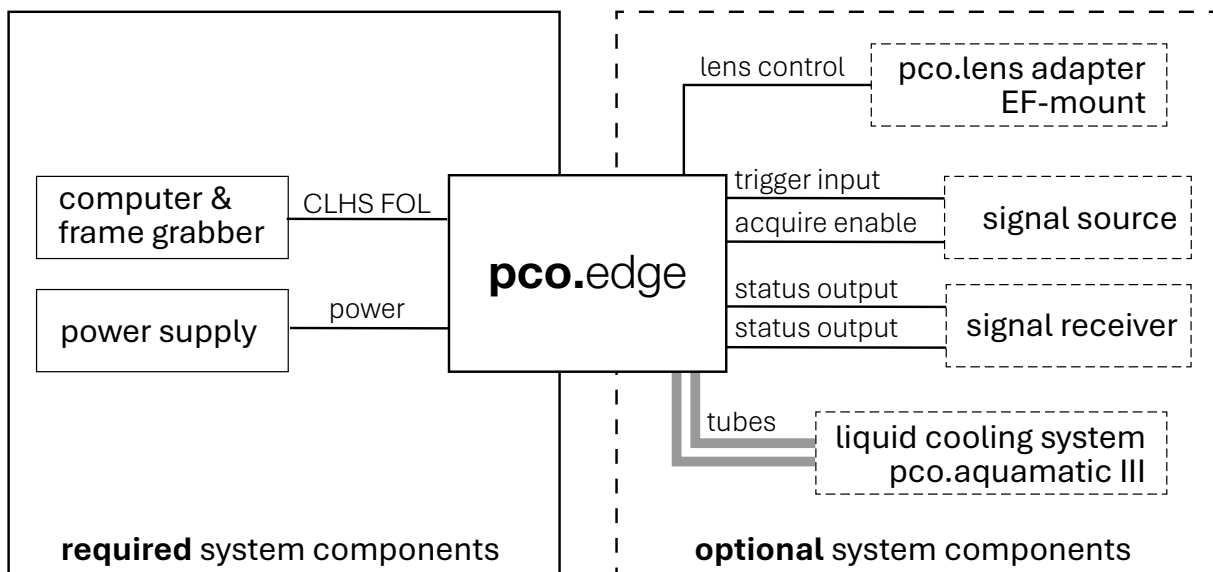
- 1** When using liquid cooling, connect the camera to an external liquid cooling system.
- 2** Connect the power supply and cable.
- 3** Remove all protective covers and connect the FOL cable to the frame grabber for data transfer.

**Optional components:**

- 4** Connect a coaxial cable to one or both SMA input connectors for signal input.
- 5** Connect a coaxial cable to one or both SMA output connectors for status signal output.
- 6** Connect the pco.lens adapter EF-mount to the lens control port for remote lens control.



**Example setup:**



© 2026 Excelitas Technologies Corp. All rights reserved. The Excelitas logo, Excelitas® and PCO® are registered trademarks and pco.vision™ is a trademark of the Excelitas group of companies. Excelitas reserves the right to change this document at any time without notice and disclaims liability for editorial, pictorial or typographical error. Quick Start Guide pco.edge CLHS v2.0.0

