

title: pco.edge programmer

type: manual

file name: MA_pco.edge.programmer_111.doc

version: Rel V01.11

release date: 2013-08-14

reference to:

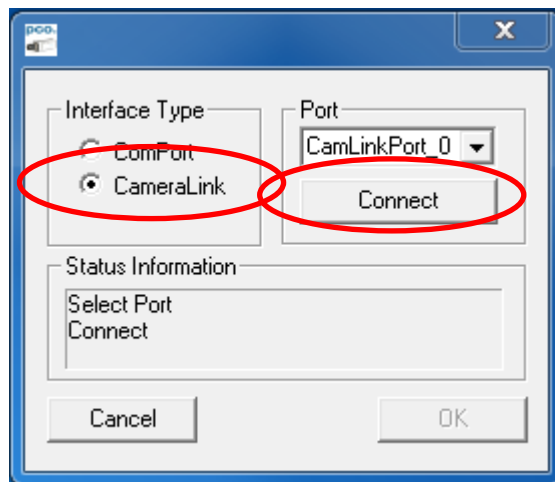
author: AGR, SSC

available to:

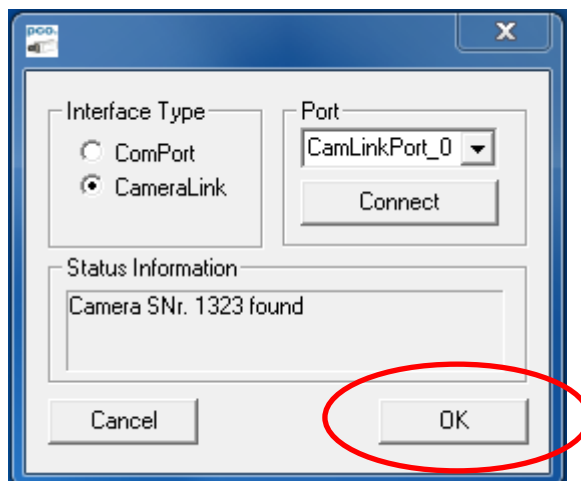
content / history: This is a manual for the firmware programmer of the pco.edge. The current firmware package can be found at www.pco.de

1 How to Update

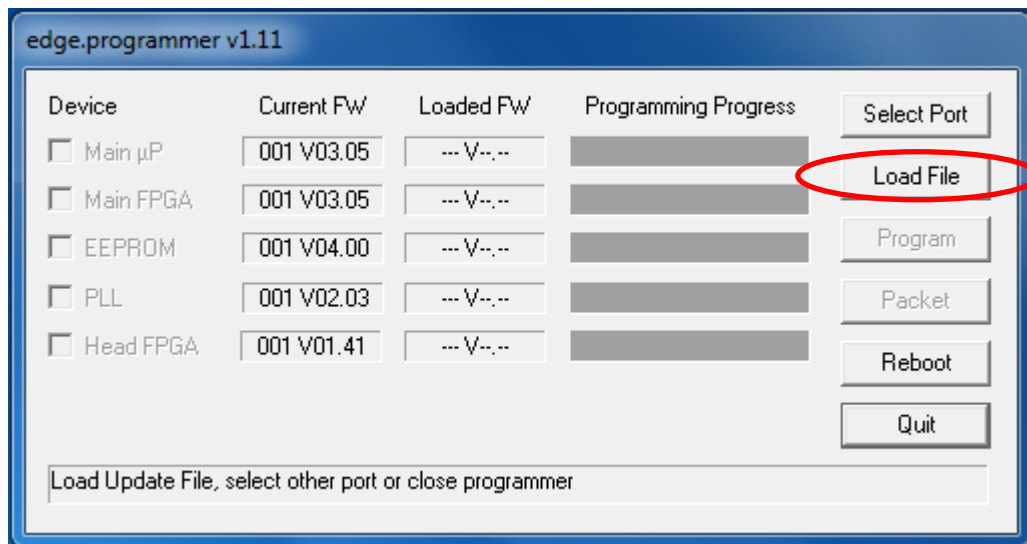
- Copy the appropriate executable (32 or 64-bit) into the CamWare folder
- Run the update programmer "Edge.Programmer.exe".
- Select "CameraLink" and press "Connect"



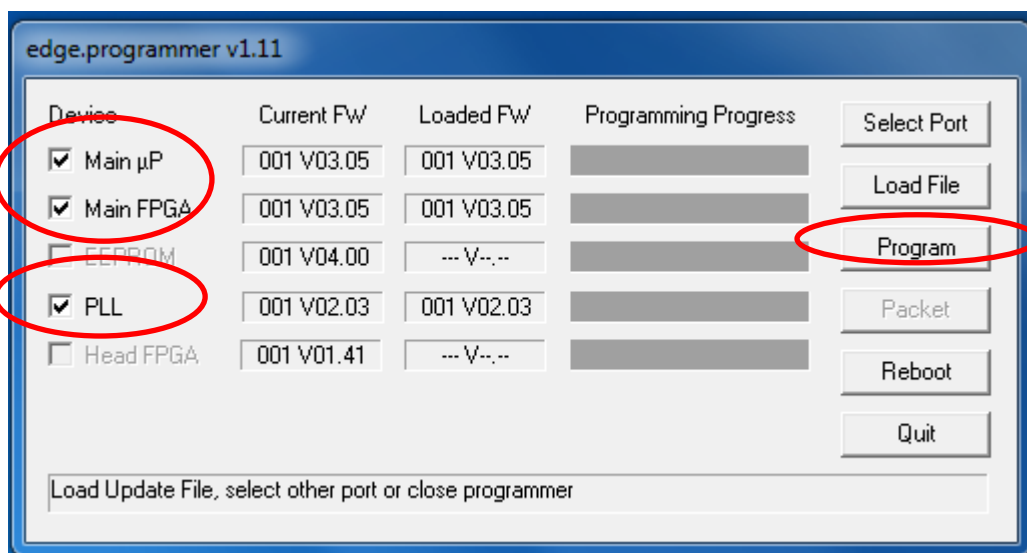
- When connected (e.g. SN 1323) press "OK"



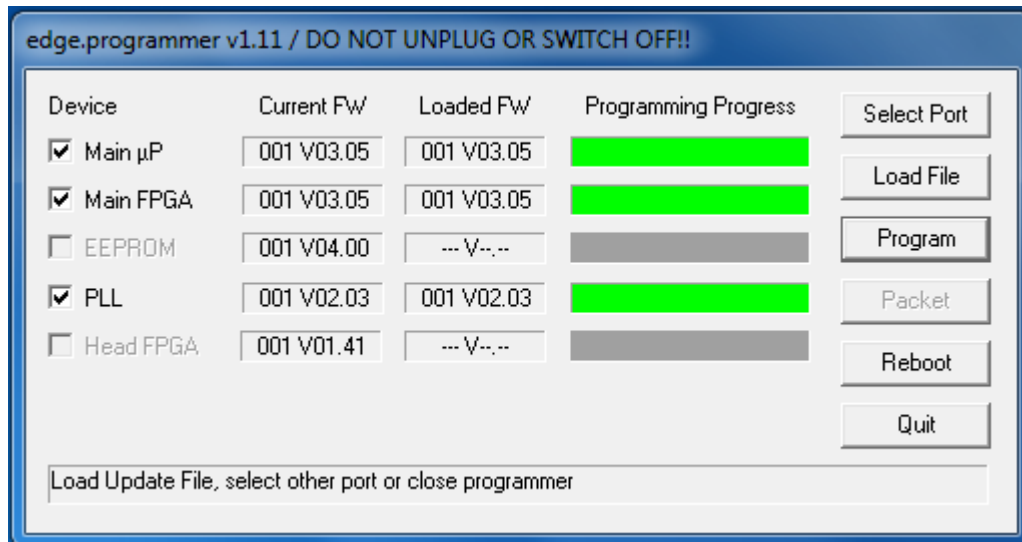
- e) Load file "FW_pco.edge_5.5_XXX.ppg ": XXX = current firmware available at www.pco.de



- f) Select all three devices (Main µP, Main FPGA, PLL) and press "Program"



- g) wait until programming has finished



- h) Press Quit

