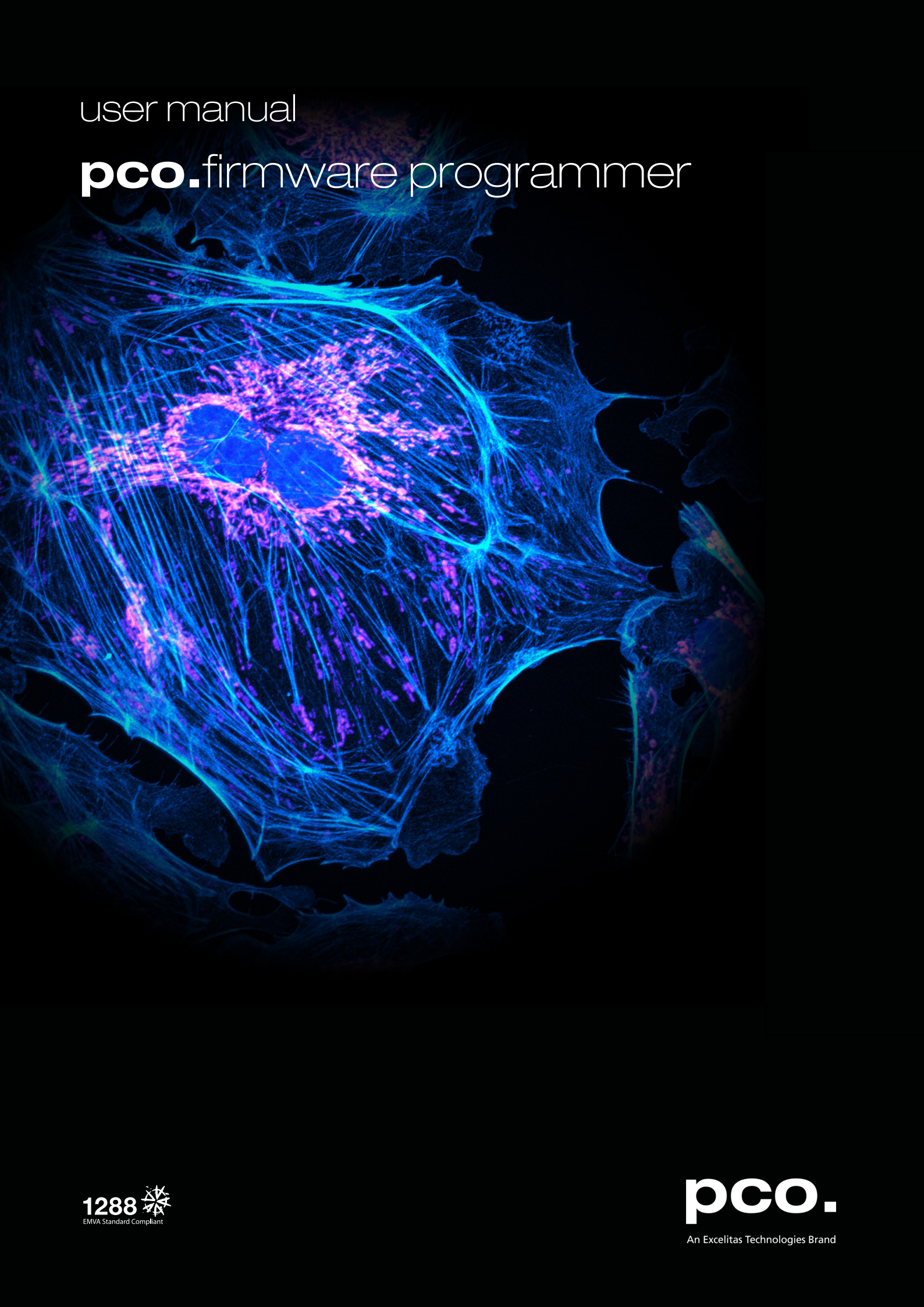


user manual

pco.firmware programmer



1288 
EMVA Standard Compliant

pco.
An Excelitas Technologies Brand

**PCO asks you to carefully read and follow the instructions in this document.
For any questions or comments, please feel free to contact us at any time.**



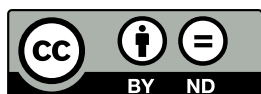
An Excelitas Technologies Brand

telephone:	+49 (0) 9441 2005 50
fax:	+49 (0) 9441 2005 20
postal address:	Excelitas PCO GmbH Donaupark 11 93309 Kelheim, Germany
email:	info@pco.de
web:	www.pco.de

pco.firmware programmer user manual 1.5.0

Released March 2022

©Copyright Excelitas PCO GmbH



This work is licensed under the Creative Commons Attribution-NoDerivatives 4.0 International License. To view a copy of this license, visit <http://creativecommons.org/licenses/by-nd/4.0/> or send a letter to Creative Commons, PO Box 1866, Mountain View, CA 94042, USA.

Contents

1	General	4
1.1	Introduction	4
1.2	Availability	4
1.3	Support	4
2	Firmware update preparations	5
3	Update process	6

1 General

1.1 Introduction

This manual describes the firmware update procedure of a PCO camera.

1.2 Availability

Available for these camera models:

- pco.dicam
- pco.panda 26, pco.edge 26
- pco.edge 5.5, pco.edge 4.2, pco.edge 3.1 with Camera Link interface
- pco.edge 5.5, pco.edge 4.2 with CLHS FOL interface
- pco.panda 4.2, pco.panda 4.2 bi, pco.edge 4.2 bi with USB 3.1 Gen 1 interface
- pco.edge 5.5, pco.edge 4.2, pco.edge 3.1 with USB 3.0 interface (since FW v2.00)

1.3 Support

In case of errors please contact us at PCO:

- support@pco.de
- tel +49 9441 2005 0

2 Firmware update preparations

The following files are required for the firmware update process:

- Firmware programmer application: pco.programmer.exe
- Firmware update file (example): FW_pco.xxx_xxx_xxx_xxx_xx.ppg

Follow the steps below:

- 1 The camera must be connected to your computer.**
- 2 Now switch on the camera.**
- 3 Please close all open programs on your computer.**
- 4 Start the pco.programmer.exe**

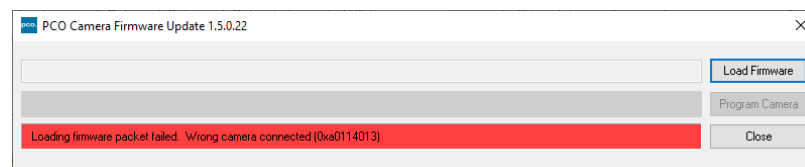
Note Do not unplug and/or switch off any of your devices, neither the computer, nor the camera during the update!

3 Update process

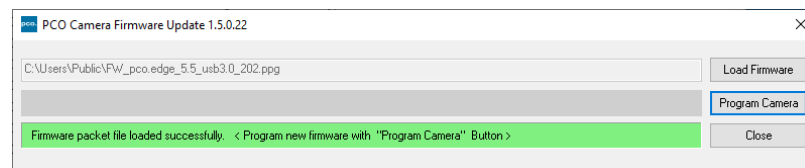
Press **Load Firmware** and select the appropriate update file.



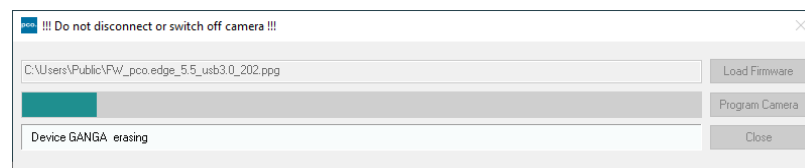
If a wrong camera is connected or a wrong package is selected, the firmware programmer will show a warning message.



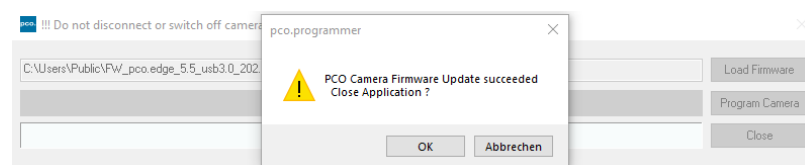
If the firmware package and camera fit: The message **Firmware packet file is loaded successfully** will appear, then press **Program Camera**.



The update process will take a few minutes. The camera system will restart during this process and the connection will be interrupted for a few minutes.



Wait until the message **PCO Camera Firmware Update succeeded. Close Application?** appears.



The firmware update process is now finished. Press **OK**.

contact

pco europe

+49 9441 2005 50
info@pco.de
pco.de

pco america

+1 866 678 4566
info@pco-tech.com
pco-tech.com

pco asia

+65 6549 7054
info@pco-imaging.com
pco-imaging.com

pco china

+86 512 67634643
info@pco.cn
pco.cn



for application stories
please visit our website

pco.

An Excelitas Technologies Brand