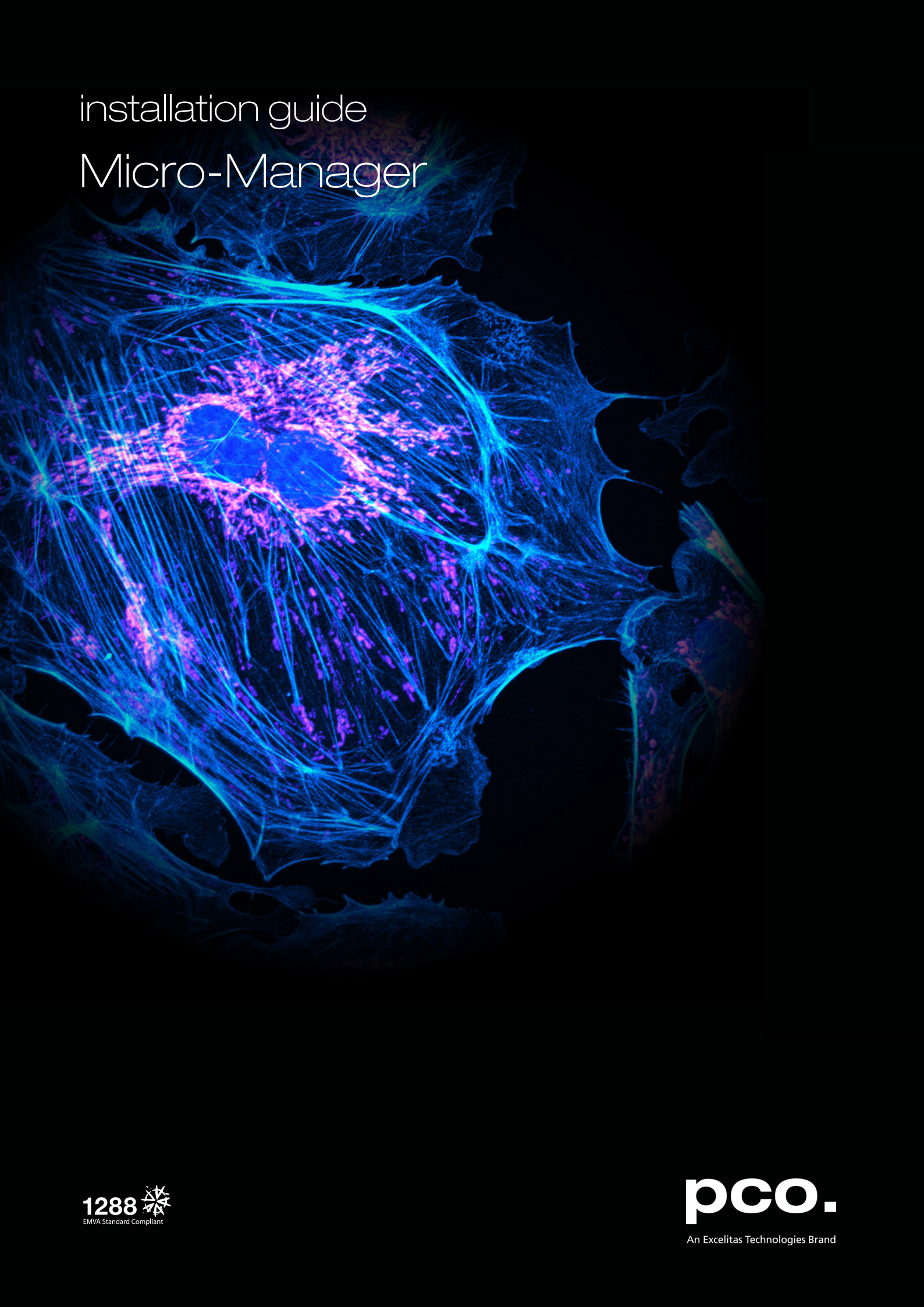


installation guide
Micro-Manager



1288 
EMVA Standard Compliant

pco.
An Excelitas Technologies Brand

**PCO asks you to carefully read and follow the instructions in this document.
For any questions or comments, please feel free to contact us at any time.**



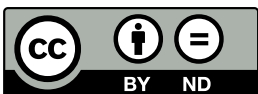
An Excelitas Technologies Brand

telephone:	+49 (0) 9441 2005 50
fax:	+49 (0) 9441 2005 20
postal address:	Excelitas PCO GmbH Donaupark 11 93309 Kelheim, Germany
email:	info@pco.de
web:	www.pco.de

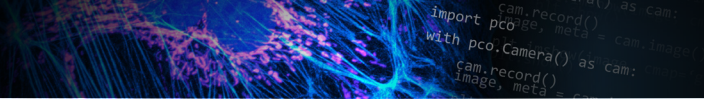
Micro-Manager installation guide 3.1.0

Released December 2021

©Copyright Excelitas PCO GmbH



This work is licensed under the Creative Commons Attribution-NonCommercial 4.0 International License. To view a copy of this license, visit <http://creativecommons.org/licenses/by-nd/4.0/> or send a letter to Creative Commons, PO Box 1866, Mountain View, CA 94042, USA.



Contents

1 Introduction	4
1.1 Supported Cameras	4
1.2 About Micro-Manager	4
2 Micro-Manager	5
2.1 Download	5
2.2 Installation	6
2.3 Copy PCO Files	7
3 Configuration	8
3.1 Hardware Configuration Wizard	8
3.2 Configuration Settings	10
3.3 Color Camera	12

1 Introduction

1.1 Supported Cameras

Include PCO's entire range of high performance scientific cameras into your specific microscopy setup with Micro-Manager.

All monochrome and color versions of the following list are supported:

Camera	Sensor	Interface	Bit	Alignment
pco.1200	CMOS	FW/CL/GigE/USB 2.0	10	MSB*
pco.1300	CCD	FW	12	"
pco.1400	"	FW	14	"
pco.1600	"	"	14	"
pco.2000	"	"	14	"
pco.4000	"	"	14	"
pco.pixelfly usb	"	USB 2.0	14	"
pco.ultraviolet	"	USB 2.0	14	"
pco.dimax	CMOS	GigE/USB 2.0/USB 3.0	12	"
pco.flim	"	USB 3.0	14	"
pco.edge	sCMOS	CL/CLHS/USB 3.0	16	"
pco.panda	"	USB 3.1 Gen 1	16	"

Explanation *Interface:* FW = Firewire IEEE1394A; CL = Camera Link, CLHS = Camera Link HS
Alignment: *most significant bit

1.2 About Micro-Manager

In contrast to virtually all of the available commercial solutions, Micro-Manager supports multiple platforms and provides an **open plugin interface for adding new devices**. In addition, Micro-Manager is compatible with the widely used image processing package **ImageJ**, available in the public domain.

Combined with ImageJ, Micro-Manager provides a **full featured microscope management and image processing package**, comparable in capabilities to commercial solutions. It is distributed free of charge and under an Open Source license. Its code base and functionality can be customized, extended, and re-used practically without restrictions.

PCO provides a free generic adapter for PCO scientific cameras on Microsoft Windows platforms.

2 Micro-Manager



Copyright for Micro-Manager:
 GNU "Lesser General Public License"
[Official Micro-Manager website](#)

2.1 Download


µManager
 THE OPEN SOURCE MICROSCOPY SOFTWARE

OVERVIEW · DOWNLOADS · DOCUMENTATION · DEVICES · PROGRAMMING · SUPPORT · EVENTS · CREDITS · LOG IN

downloads

- Download latest release of Micro-Manager
- Download Nightly Builds
- Download old releases
- Installation Notes
- Source Code

Download Micro-Manager Latest Release



µManager™ is a trademark of The Regents of the University of California. Used with Permission.

Micro-Manager versions

Currently, there are 2 usable versions of Micro-Manager: 1.4 and 2.0-gamma. These versions use the same code to interface to devices, but differ in their user interface, and file reading/saving code. 2.0-gamma is actively developed and maintained. 1.4 is no longer developed (except for the device support and the ASI diSPIM plugin). If you start using Micro-Manager, it is recommended to use the latest nightly build of 2.0-gamma.

[\(Previous releases\)](#)

Note Due to security issues on OSX 10.12 and later, Micro-Manager does not start when opening ImageJ. To circumvent this, within the Micro-Manager folder in Applications, hold command and drag ImageJ onto the desktop. Then hold command and drag it back in. Then try running again. See [Installation Notes](#).

Nightly Builds

Although there has been no official release for quite some time, further development and multiple bug fixes have occurred in the 1.4 branch in parallel with development of 2.0. Nightly builds are almost always stable and a better choice for most users than the latest official release.

- [Version 2.0-gamma \(Windows\)](#) (you most likely want the 64-bit version)
- [Version 2.0-gamma \(Mac\)](#)
- [Version 1.4 \(Windows\)](#) (pay attention to 32-bit or 64-bit, both are listed but you need the one matching your Windows OS)
- [Version 1.4 \(Mac\)](#)

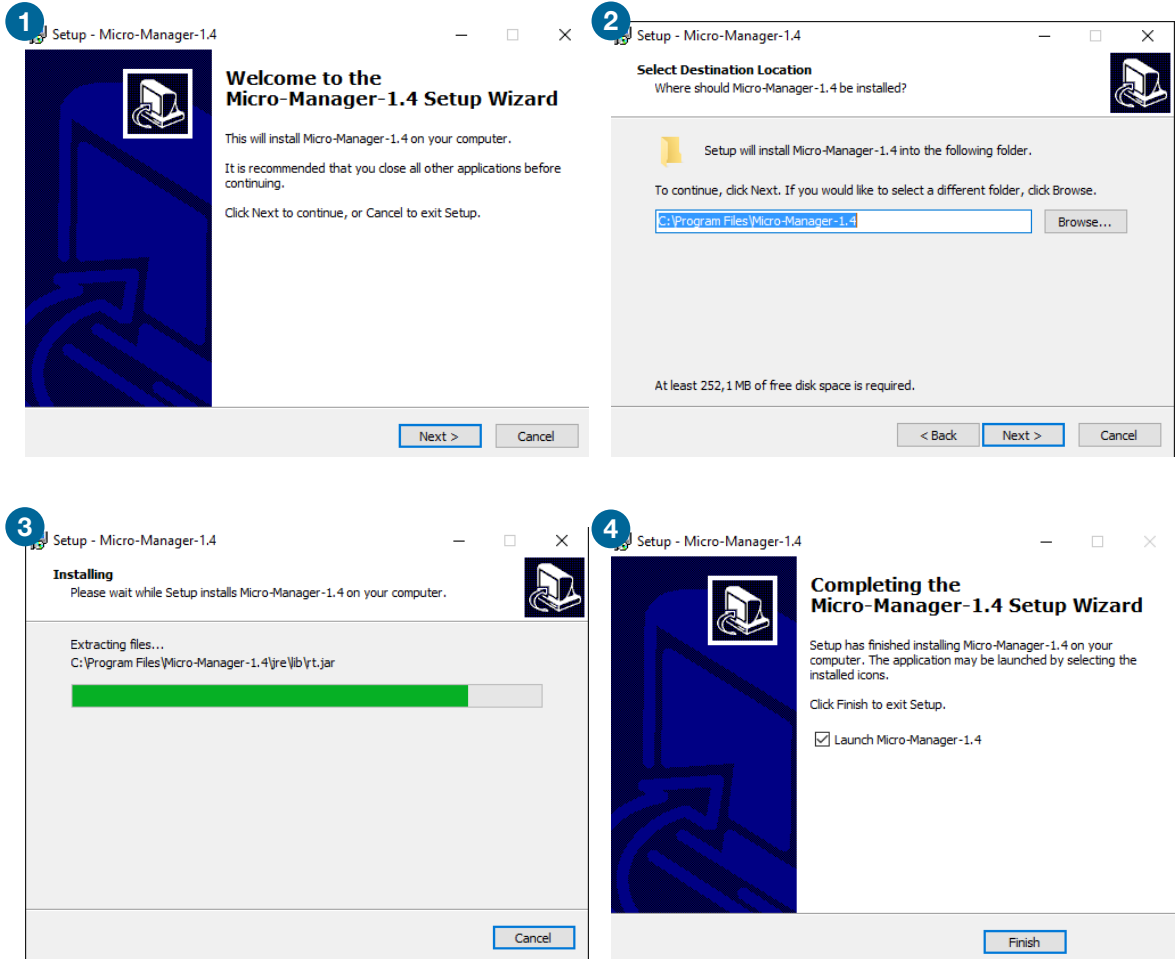
First, **download Micro-Manager**. PCO recommends to **download Nightly Builds** to get the latest version.

Note Nightly Builds is a beta version and is not for productive use: use at your own risk! You always need to install pco.camware, pco.sdk, or the pco.runtime package, because some runtime DLL files from the installed packages are needed (see **2.3**).

Please **do not use the latest release** as it does not contain current bug fixes or the most recent PCO device adapter DLLs.

2.2 Installation

Please follow the installation wizard:



2.3 Copy PCO Files

Please **copy** the corresponding **DLL files** into your Micro-Manager directory.

These files should be found **on your computer** under:

Looking for 64 bit DLLs:

- *C:\Program files\PCO Digital Camera Toolbox\pco.camware*
- *C:\Program files(x86)\PCO Digital Camera Toolbox\
pco.sdk\bin64
pco.runtime\bin64*

Looking for 32 bit DLLs:

- *C:\Program files(x86)\PCO Digital Camera Toolbox\
pco.sdk\bin
pco.runtime\bin*

Files needed for all PCO cameras:

- ***PCO_Conv.dll***
- ***PCO_CDlg.dll***
- ***SC2_Cam.dll***

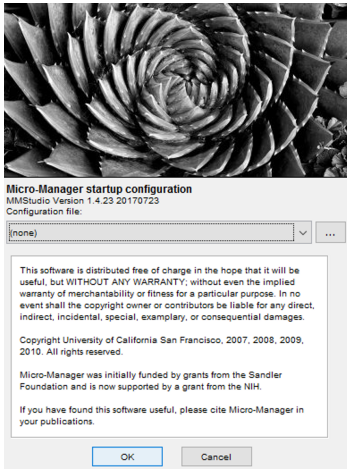
In the case of **Camera Link HS interface** you also need the following file:

- ***sc2_clhs.dll***

In case of **Camera Link** you also need the following files depending on the used framegrabber:

- Silicon Software ME4: ***sc2_cl_me4.dll***
- Matrox: ***sc2_cl_mtx.dll, clsermtx.dll, mtxclsermil.dll***
- National Instruments: ***sc2_cl_nat.dll***

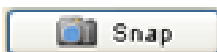
3 Configuration



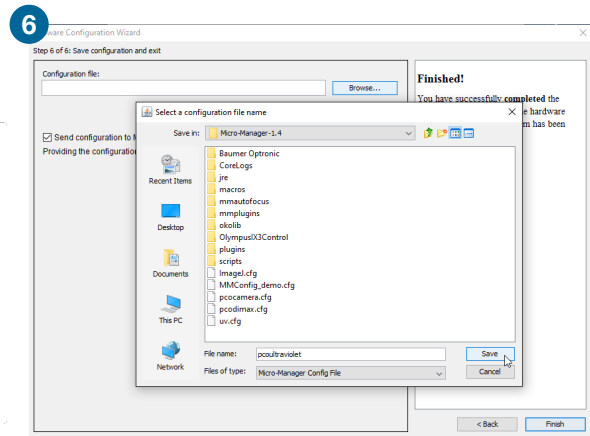
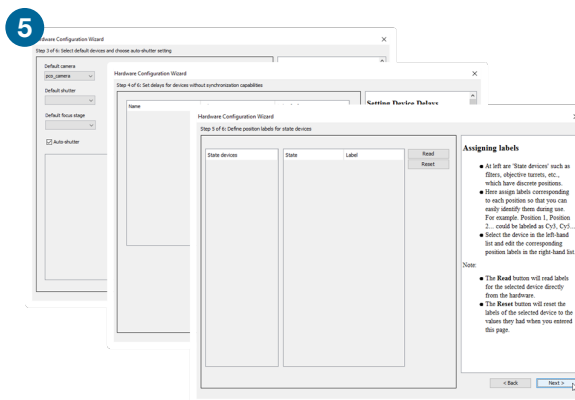
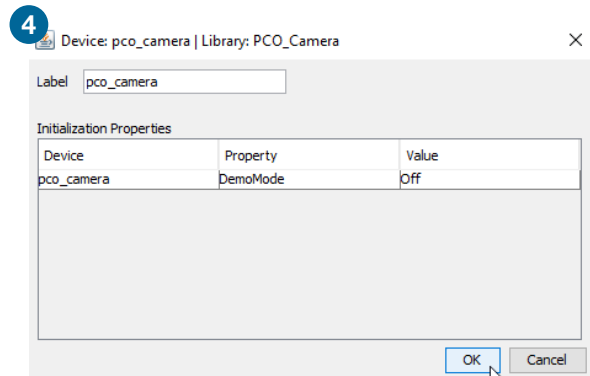
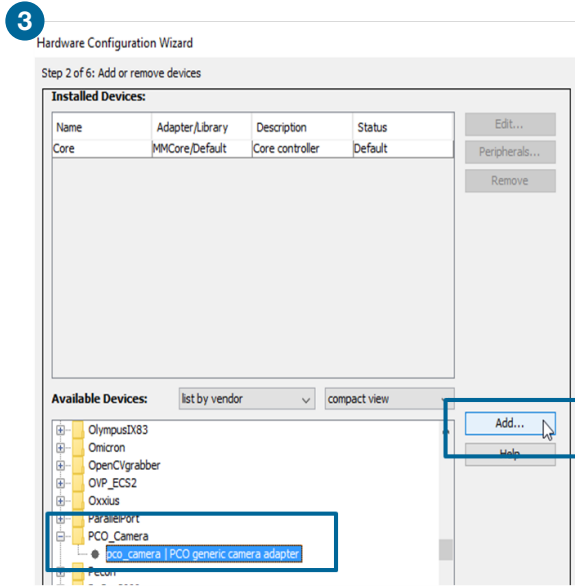
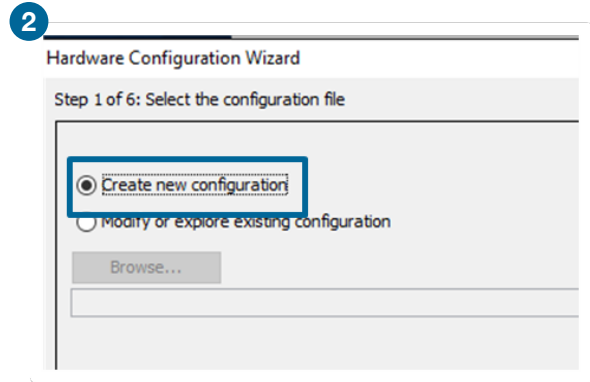
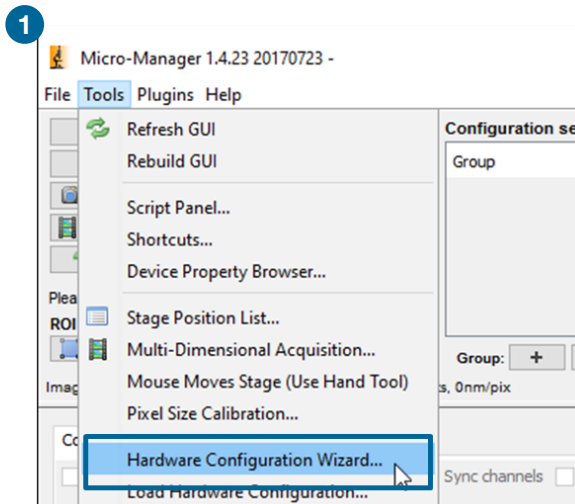
- Start your PCO camera
- Start Micro-Manager
- Open Micro-Manager with the default configuration (none)

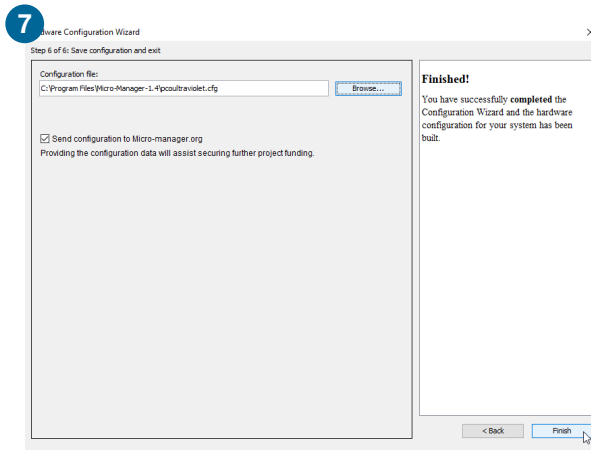
3.1 Hardware Configuration Wizard

- 1 Start the Hardware Configuration Wizard
- 2 Create a new configuration
- 3 Add the pco_camera adapter from the list
- 4 Micro-Manager will scan for cameras
- 5 Skip the steps 3 + 4 + 5
- 6 Save the new configuration (e.g. “pcoultraviolet”) to the Micro-Manager directory
- 7 Finish



Snap image for test

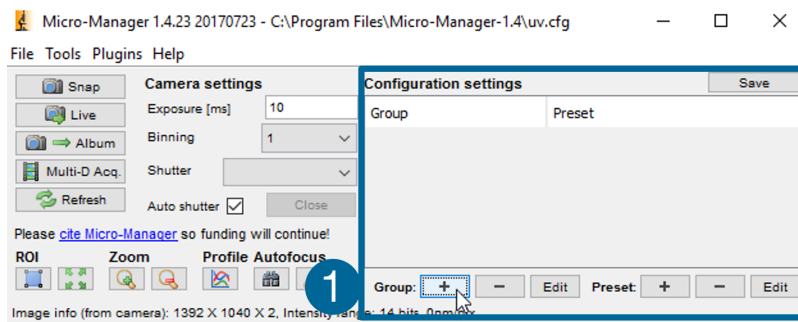




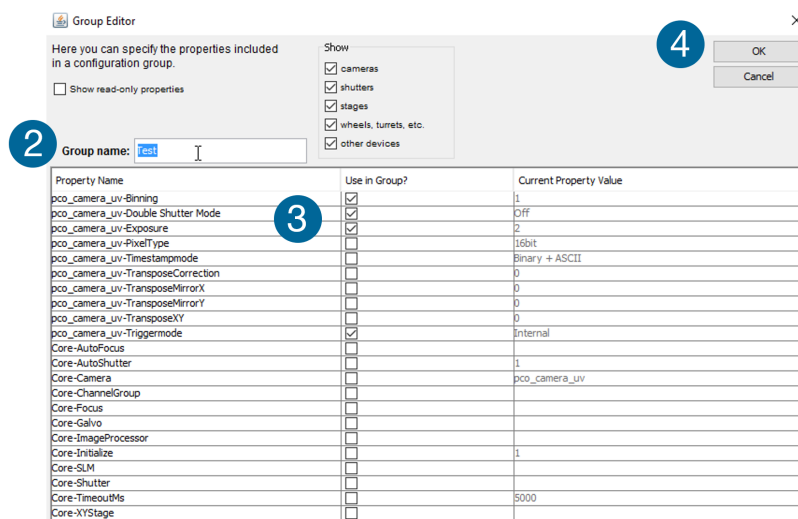
3.2 Configuration Settings

After the Hardware Configuration Wizard is finished successfully, the Configuration settings can be predefined.

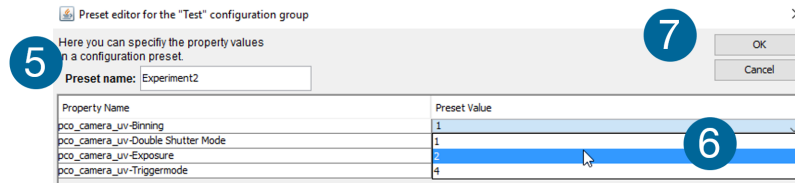
First add a Group **1**.



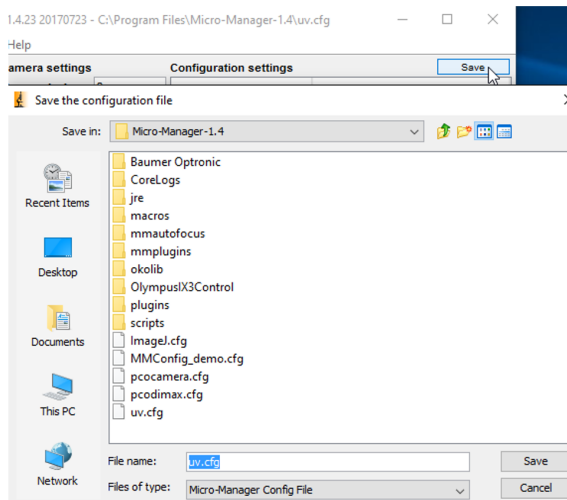
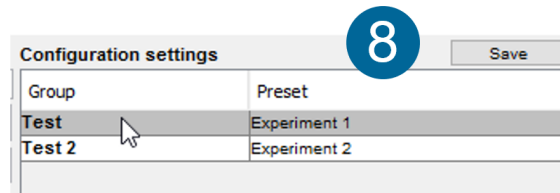
The **Group Editor** opens. Enter a group name **2** and select the property names that you want to add to your group **3**. Press **OK** **4**.



The **Preset editor** for the configuration group opens. Enter the **Preset name** 5. Select the **Preset values** 6. Press **OK** 7.

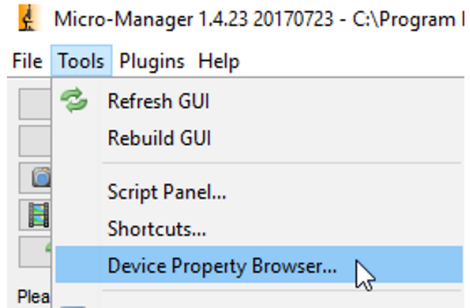


The **Configuration settings** window displays all your configuration settings. Press **Save** to save your **Groups and Presets** 8.



3.3 Color Camera

Open the **Device Property Browser** to change the camera settings.



If you use a PCO color camera, change the **pco_camera-PixelType** to **RGB 32bit**. The **standard value is 16bit** – this will provide a monochrome image.

pco_dimax-PixelType	RGB 32bit
pco_dimax-Signal 1 (Acquire Enable) Filter	16bit
pco_dimax-Signal 1 (Acquire Enable) Polarity	8bit
pco_dimax-Signal 1 (Acquire Enable) Status	RGB 32bit
pco_dimax-Signal 1 (Acquire Enable) Tune	1111

contact

pco europe

+49 9441 2005 50
info@pco.de
pco.de

pco america

+1 866 678 4566
info@pco-tech.com
pco-tech.com

pco asia

+65 6549 7054
info@pco-imaging.com
pco-imaging.com

pco china

+86 512 67634643
info@pco.cn
pco.cn



for application stories
please visit our website

pco.

An Excelitas Technologies Brand