

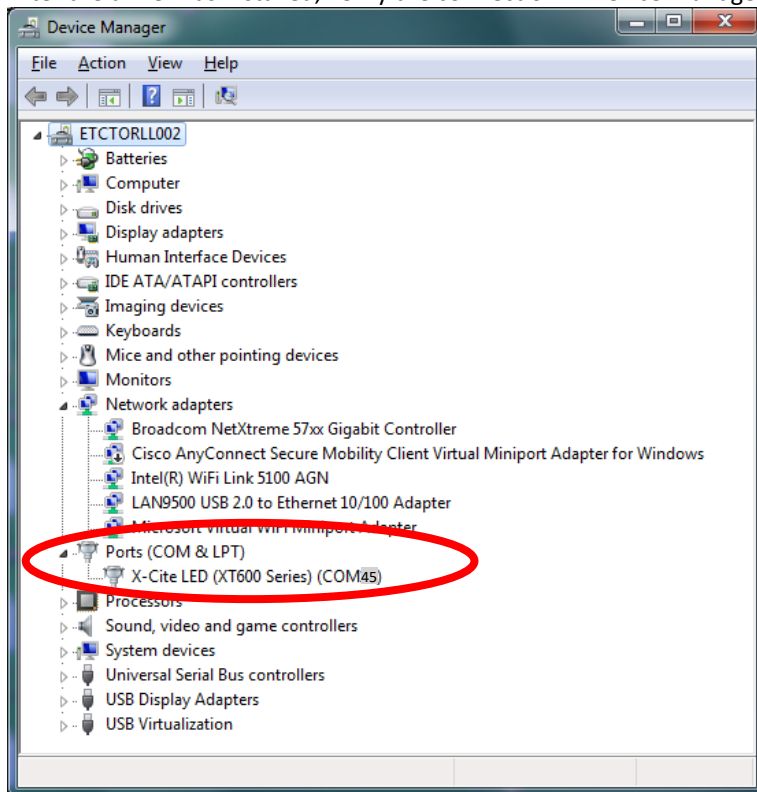


X-Cite® Firmware Update Instructions

These instructions will guide you through the process of updating the firmware of an X-Cite unit via a computer running Windows 7-10.

Connect

1. Connect the X-Cite unit to your PC with the supplied USB cable.
2. Turn on the X-Cite unit.
3. Let the driver install from Windows update, or download and install from: <http://www.excelitas.com/Pages/Technology/Software.aspx>
4. After the driver has installed, verify the connection in Device Manager and note the COM port number.



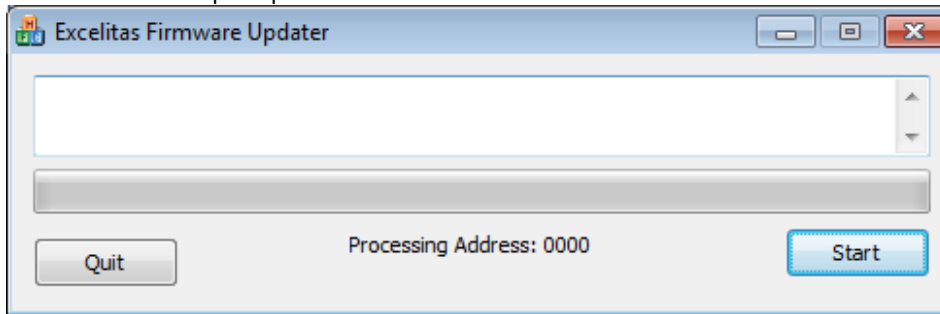
Obtain the Firmware

5. Obtain the firmware from Tech Support or Product Management.
6. If the update zip file ends with .zi_ save to your computer and rename .zip
7. Extract the contents of the zip file into a folder on your computer.

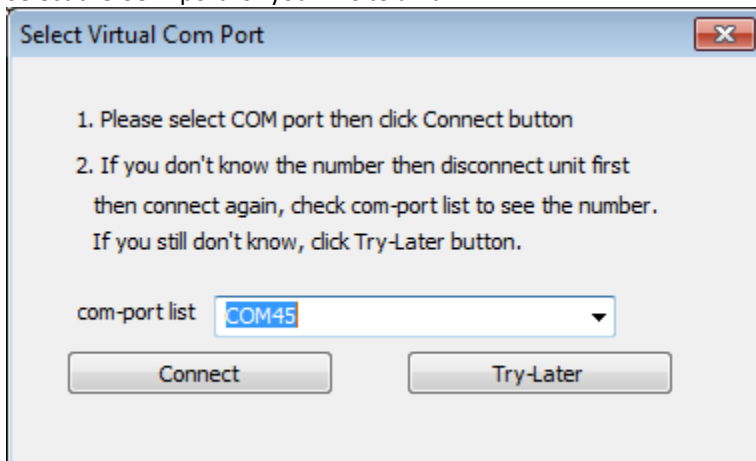


Install the Firmware

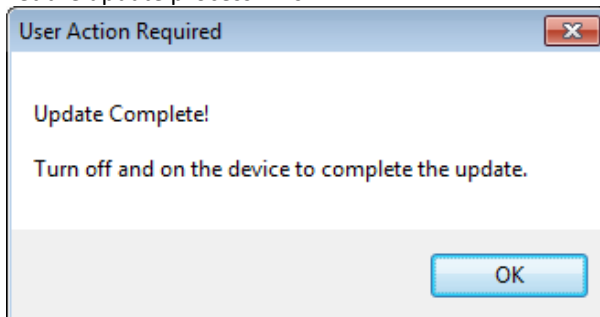
8. Run ExcelitasUpdate executable from the folder created above.
9. Click "Start" at the prompt.



10. Select the COM port for your X-Cite unit.



11. Click on Connect.
12. Let the update process finish.



Completion

13. Power off and on the X-Cite unit.
14. The unit is updated and ready for use.
15. To verify firmware version in the speedDIAL "Service Menu": Press and hold the dial, select "Srcv" and then "S/W1".



Trouble Shooting

1. X-Cite unit is turned off during the update.
 - a. Turn the X-Cite unit back on.
 - b. Run the ExcelitasUpdate executable in the folder above again.
 - c. Click start, the update program will recognize that the unit is in the firmware update process.
 - d. Let the process complete.
 - e. Go to step 13.

2. The Update Process failed.
 - a. Turn the X-Cite unit off.
 - b. Wait 10 seconds.
 - c. Turn the X-Cite unit on.
 - d. Run the ExcelitasUpdate executable in the folder above again.
 - e. Click start, the update program will recognize that the unit is in the firmware update process.
 - f. Let the process complete, if successful, go to step 13. If it fails again, contact Tech Support.

3. The ExcelitasUpdate program does nothing after clicking "Connect".
 - a. Some Windows computers take up to 10 minutes to install the generic driver, wait at least 10 minutes for it to proceed.

Contact Information

Excelitas Technologies
2260 Argentia Road
Mississauga ON
L5N6H7 CANADA

Telephone: +1 905 821-2600
Toll Free (USA and CANADA): +1 800 668-8752

Technical Support: techsupport@excelitas.com
General: x-cite@excelitas.com

www.excelitas.com