

user manual

pco.firmware programmer



pco.

Target Audience: This software is designed for use by technicians, engineers, and scientists.

In case of any questions or comments, please contact us at PCO.



telephone	+49 (0) 9441 2005 50
fax	+49 (0) 9441 2005 20
email	info@pco.de
postal address	PCO AG Donaupark 11 93309 Kelheim, Germany

The cover photo shows an exemplary PCO camera system.
The lens is sold separately.

Copyright © 2018 PCO AG (called PCO in the following text), Kelheim, Germany. All rights reserved. PCO assumes no responsibility for errors or omissions in these materials. These materials are provided as is without warranty of any kind, either expressed or implied, including but not limited to, the implied warranties of merchantability, fitness for a particular purpose, or non-infringement. PCO further does not warrant the accuracy or completeness of the information, text, graphics, links or other items contained within these materials. PCO shall not be liable for any special, indirect, incidental, or consequential damages, including without limitation, lost revenues or lost profits, which may result from the use of these materials. The information is subject to change without notice and does not represent a commitment on the part of PCO in the future. PCO hereby authorizes you to copy documents for non – commercial use within your organization only. In consideration of this authorization, you agree that any copy of these documents, which you make, shall retain all copyright and other proprietary notices contained herein. Each individual document published by PCO may contain other proprietary notices and copyright information relating to that individual document. Nothing contained herein shall be construed as conferring by implication or otherwise any license or right under any patent or trademark of PCO or any third party. Except as expressly provided, above nothing contained herein shall be construed as conferring any license or right under any PCO copyright. Note that any product, process, or technology in this document may be the subject of other intellectual property rights reserved by PCO, and may not be licensed hereunder.

Released May 2018 © PCO AG

By Thomas Hartmann

pco. firmware programmer V1.00 © PCO AG, Germany

FIRMWARE PROGRAMMER

1.1 INTRODUCTION

This manual describes the firmware update procedure of a PCO camera.

There are different versions of the firmware programmer for 32 bit and 64 bit computer systems.

1.2 AVAILABILITY

Available for these camera models:

- pco.panda 4.2 USB 3.1 interface
- pco.edge with CLHS interface

1.3 SUPPORT

In case of errors please contact us at PCO:

- support@pco.de
- tel +49 9441 2005 0

1.4 FIRMWARE UPDATE PREPERATIONS

The following files are required for the firmware update process:

- Firmware programmer application: pco.programmer.exe
- Firmware update file: FW_pco.xxx_xxx_xxx_xxx_xx.ppg

Follow the steps below:

- 1 The camera **must be connected to your computer**.
- 2 Now **switch on** the camera.
- 3 Please close all open programs on your computer.
- 4 **Start** the pco.programmer.exe

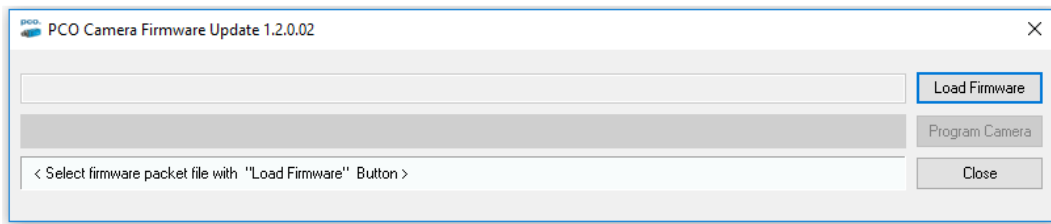
NOTICE

Do not unplug

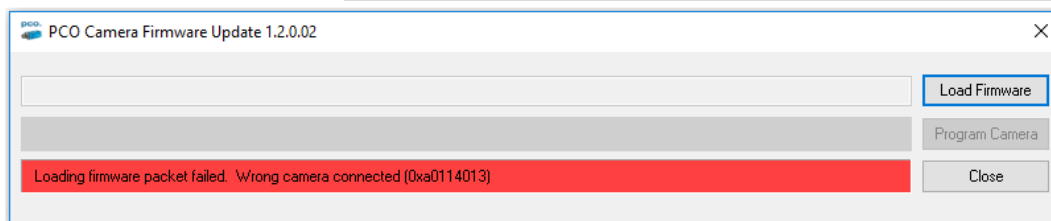
Do not unplug and/or switch off any of your devices, neither the computer, nor the camera during the update.

1.5 UPDATE PROCESS

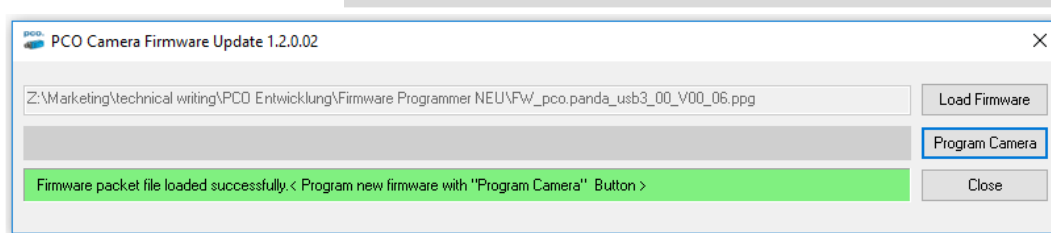
Press **Load Firmware** and select the appropriate update file.



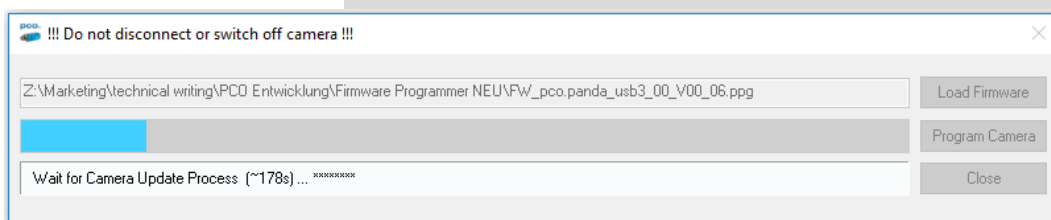
If a wrong camera is connected or a wrong package is selected, firmware programmer will post a warning.



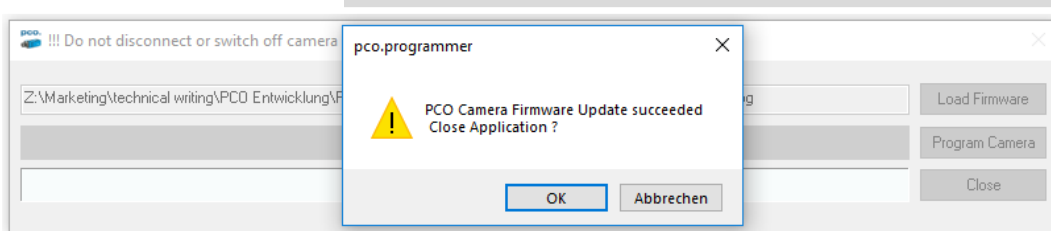
If firmware package and camera fit: **Firmware packet file is loaded successfully**, press **Program Camera**.



The update process will take a few minutes. The camera system will **restart** during this process and connection will be interrupted for a few minutes.



Wait till **PCO Camera Firmware Update succeeded. Close Application?** is displayed.



The firmware update process is now **finished**. Press **OK**.

ABOUT PCO



pco.

pco.history

“PCO” stands for what we are: a Pioneer in Cameras and Optoelectronics. With 30 years of expert knowledge and experience PCO has forged ahead to becoming a leading specialist and innovator in digital imaging used in scientific and industrial applications such as life and physical science, high-speed imaging and machine vision. However, the beginning of PCO’s story of success dates back to the 1980s and a research project of the founder, Dr. Emil Ott, who was working at the Technical University Munich for the Chair of Technical Electrophysics. While performing measurements with intensified slow scan cameras, Dr. Ott realized that the existing standard did not meet the sophisticated requirements of scientific applications – and so PCO came to life in 1987. With a small team of engineers Dr. Ott began to develop his first image intensified camera followed by several variations on the original model, geared to overcoming all the existing flaws and surpassing standards of the day. During these early years PCO developed a now well established core of advance technologies used as the foundation to develop cutting edge products.

In the early 1990s PCO expanded its business activities to the global market by successfully establishing an international network of highly trained sales partners and customers. We entered additional fields beyond traditional scientific research expanding the potential for our cameras’ applications in life science, automotive testing and even broadcasting. This step paved the way for a wide range of innovative highlights:

As of 2017, PCO has three decades of technical know-how and expert knowledge in the development and manufacturing of high-performing camera systems. In-house competence of all significant technical disciplines and partnering with leading image sensors manufactures ensures cutting edge sCMOS, CMOS and CCD technology for all PCO cameras.

pco.prospect

“If you want to do something special, particularly in the high end fields, you have to develop your own image sensors. So we work with partner companies who develop tailored sensors made especially for us. This is something we are doing continuously, so we’re already working on the next generation of cameras that we will introduce in the coming years” – Dr. Emil Ott.

In PCO’s first 30 years, Dr. Emil Ott took a company that he started right after finishing university and has built it into a major player in scientific and industrial cameras – and there’s plenty more to come.

pco.