

OmniCure®

OmniCure® UV Curing Product Catalog




excelitas®

Table of Contents

UV SPOT CURING SYSTEMS

3 What's New In UV Curing

Lamp-based systems

4-5 S2000 Elite

6 S1500 Pro

7 Radiometry Devices And Accessories

8-10 Light Guides

11 Optical Accessories

12 Uv Spot Curing Lamps & Accessories

LED-Based Systems

13 LX500 V2

14 UV Led Heads And Accessories

15 LS200

UV AREA CURING SYSTEMS

Small Area Cure

17 AC2 Series

18 AC4 Series

19 AC5 Series

Large Area Cure

20 AC7 Series

21-22 AC8 Series

23 AC8-HD Series

24-25 AC9 Series

26 AC9225-F Series

27 **AC Series Bundle Packages & Accessories**

28 SC Series System Controllers

29 CV300 Small Volume Production Conveyor

29 PLC2000

30 **Replacement Parts and Add-Ons**

31 **Optical Adapters**

32-33 **Custom Solutions / Extended Warranty**

34-35 **Excelitas Representatives & Distributors**

What's NEW!

OmniCure® S Series UV SPOT CURING SYSTEMS

- Advanced UV Spot Curing with the new S2000 Elite and S1500 Pro: Next-gen lamp-based UV spot curing systems ensure power, reliability, and quality for demanding manufacturing applications.
- Enhanced Productivity and Precision: Closed-Loop Feedback* and Intelli-lamp® technologies guarantee precise dosage delivery.
- Compatibility and Easy Integration: Easily integrate into existing S2000/S1500 production lines as a plug and play solution.
- Advanced Control: Calibration with the OmniCure® R2000 Radiometer*, remote control management and monitoring through the WEB UI*, with a 4.3" LCD touch screen display for seamless navigation. StepCure® 2.0 with PLC Control capability enhances automation. Easily integrate into Industry 4.0 environments.

*Only available on S2000 Elite

For more information on the S2000 Elite, refer to Pages 4-5.

For more information on the S1500 Pro, refer to Page 6.



OmniCure LS200 UV LED RADIOMETRY AND CALIBRATION SYSTEM

- Precision Measurement: Accurate power or irradiance measurement directly at the cure site, with remarkable accuracy (+/- 10%) and resolution (1 mW, 1 mW/cm²).
- Optimized for UV LED Sources: Calibrated for monochromatic UV LED sources. LS200 ensures precise control and repeatability when paired with the optional beam positioning kit.
- Versatile: Tailor your measurement needs with options for irradiance (LS200) or optical power (LS200P), covering a broad range (1 mW to 2000 mW or 50 mW/cm² – 40 W/cm²) and selectable wavelengths from 320-750 nm.
- Compact Design and Automation: LS200's compact design allows measurements in confined areas. Combine seamlessly with LX500 or LM2011 for calibration and integration into automated workflows

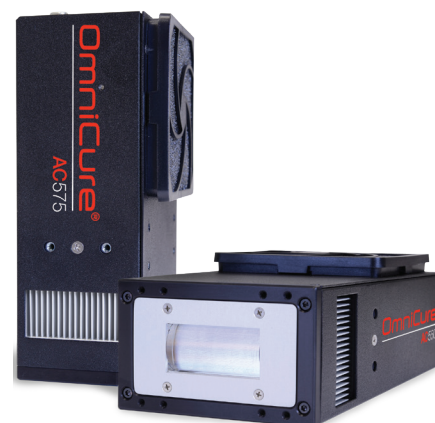
For more information on the LS200, refer to Page 15



OmniCure AC575-405 UV LED AREA CURING SYSTEM

- Designed with a unique combination of high output LEDs and custom optics that deliver up to 15 W/cm², this air-cooled UV LED system provides high irradiance at flexible working distances, enabling manufacturers to achieve outstanding productivity with reduced running costs.
- The air-cooled, compact LED head design eliminates the need for external cooling or ozone extraction thus greatly simplifying integration. The AC5 Series UV LED curing systems can also be mounted in any orientation, with different wavelengths available for optimal flexibility.

For more information, refer to page 19



OmniCure S Series

UV SPOT CURING

OmniCure S2000 Elite

Introducing the OmniCure S2000 Elite, a new generation lamp-based UV spot curing system designed and developed for the most demanding manufacturing applications. Offering highest reliability and quality for adhesive curing processes, the OmniCure S2000 Elite redefines UV spot curing with enhanced productivity, precision, and security, while enabling next level control and usability. Offering a powerful 200 Watt lamp with a guaranteed life of 2000 hours, the OmniCure S2000 Elite also offers our proprietary Closed-Loop Feedback technology that monitors light output in real time and automatically corrects the light output within +/- 5% to ensure a consistent and repeatable process. The new 4.3" high resolution touch screen enhances ease of use by simplifying navigation and access to system functionality. The all new StepCure 2.0 features with 7 programmable PLC output channels provide the power to easily configure cure profiles for even the most advanced workflows. When combined with the OmniCure R2000 Radiometer, the OmniCure S2000 UV spot curing system is unmatched in precision and reliability.



S2000 ELITE BUNDLES, OPTIONAL FILTERS AND NEW ACCESSORIES

Part Number	Description
010-00464R	OmniCure S2000 Elite - System Only - Lamp and optical bandpass filter not included, must be ordered separately.
010-00529R	OmniCure S2000 Elite - 320-500 nm - Includes 012-68000R Standard lamp and 320-500 nm optical bandpass filter cartridge.
010-00530R	OmniCure S2000 Elite - Surface Cure - Includes 012-69000R Surface Cure lamp and Blank optical bandpass filter cartridge.
010-00577R	OmniCure S2000 Elite - Legacy Replacement Kit - Includes 012-68000R Standard lamp, 320-500 nm optical bandpass filter cartridge, and External PLC Adapter

Accessories Description

019-00387R	S2000 Elite Filter 400-500 nm
019-00388R	S2000 Elite Filter 365 nm
019-00389R	S2000 Elite Filter 320-390 nm
019-00390R	S2000 Elite Filter 250-450 nm
019-00391R	S2000 Elite Filter 320-500 nm
019-00392R	S2000 Elite Blank Filter
019-00410R	S2000 Elite, Optical bandpass filter kit

SR S2000 Elite Custom Filter options available under SR

019-00406R	S2000 Elite Intelli-Tap Supervisor NFC card
019-00407R	S2000 Elite Intelli-Tap Admin NFC card
019-00395R	S2000 to S2000 Elite External PLC adapter

OmniCure S Series

UV SPOT CURING

OmniCure S2000 Elite

TECHNICAL SPECIFICATIONS

S2000 Elite

Control & Repeatability	CLF	+/-5% or 200 W/cm ² , whichever is greater
	Calibration/ Radiometry (R2000)	Calibration/ Radiometry (R2000)
	Intelli-Lamp	V 2.0 – Not compatible with older gen systems
	High Speed Mechanical Shutter	YES (30ms)
	StepCure	StepCure 2.0 Can be programed on the System UI, Web UI, or loaded onto a SD card
Optical	Replacement Lamp Part No.	Standard: 012-68000R Surface Cure: 012-69000R
	Optical Output	Up to 37 W/cm ²
	Optical Filters	User-interchangeable
	Filter Selection	Blank filter, 250-400, 320-390, 320-500, 365, 400-500 nm Custom Filters available
	Warm-up period	Min 4 min
	Lamp Technology	High Pressure 200 Watt Mercury Vapor Short Arc with integrated Intelli-Lamp
	Lamp Life	Guaranteed 2000 hours
User Interface	Manual Control	LCD Touch Screen + Physical Keypad
	Automation / Industry 4.0 Compatibility	Built-in PLC controller with 7 programmable PLC output channels Fully programmable in new StepCure 2.0 USB Type B RJ485 Ethernet Built-in server enables Web-GUI based monitoring and remote control SD Card Store/ Read StepCure profiles, System Log, Firmware Update Flight recorder NFC Field Upgradeable system software
Electrical	Rated Input Voltage	100-240 VAC, 50/60 Hz
	Current	3.5A Max at 120 VAC 2.0A Max at 240 VAC
Physical	Size (H x W x D)	268 x 139 x 289 mm (10.54 x 5.45 x 11.38 in)
	Weight	3 KG (6.6 lbs)
	Rated Operating Temperature	15 °C to 40 °C
Warranty	System 1 Year	1 Year
	Lamp Strike 2000 Hours	2000 Hours



OmniCure S Series

UV SPOT CURING

OmniCure S1500 Pro

The OmniCure S1500 Pro system, the latest addition to the OmniCure S-series lamp-based spot curing solutions, is ideal for high-throughput UV adhesive curing and automated bonding processes used in micro-electronic and opto-electronic manufacturing. The S1500 Pro features Excelitas proprietary Intelli-Lamp 2.0 technology to enhance lamp life while maintaining optimum performance. User-interchangeable optical filters and customizable filters provide flexibility for a diverse range of application needs, while Integrated StepCure 2.0 enables highly customizable curing profiles. USB communication and SD card compatibility allows seamless connectivity and data storage, and the intuitive LCD touch screen interface simplifies operation. Industry 4.0 readiness is at your fingertips with the S1500 Pro programmable PLC output, Flight Recorder event log, and NFC key card capability.



TECHNICAL SPECIFICATIONS

S1500 Pro

Lamp Technology	Intelli-Lamp	Intelli-Lamp 2.0
	StepCure	StepCure 2.0
Optical	Replacement Lamps	Standard (012-68000R)
		Surface Cure (012-69000R)
	Optical Output	Up to 37 W/cm ²
	User-Interchangeable Optical Filters	✓
	Filter Selection	No filter, 250-400, 320-390, 320-500, 365, 400-500 nm
	Custom Filter Support	✓
	Warm-up period	Minimum 4 min.
Automation / Industry 4.0 Compatibility	Manual Control	LCD Touch Screen + Physical Keypad
	Built-in PLC controller	✓ (1 Programmable PLC output channel)
	Fully programmable in new StepCure 2.0	✓
	USB Type B	✓
	SD Card Store/ Read StepCure profiles, System Log, Firmware Update	✓
	Flight recorder	✓
	NFC Key Cards	✓
	Field Upgradable Firmware	✓
Electrical	Rated Input Voltage	100-240 VAC, 50/60 Hz
	Current	3.5A Max at 120 VAC
		2.0A Max at 240 VAC
Physical	Size (H x W x D)	268 x 139 x 289 mm (10.54 x 5.45 x 11.38 in)
	Weight	5 kg (11 lbs)
	Rated Operating Temperature	15 °C to 40 °C
Warranty	System	1 Year
	Lamp Strike	2000 Hours

Radiometer Accessories

UV SPOT CURING

OmniCure R2000 Radiometer

Radiometry is an essential technique for measuring the light output from a UV curing system in order to maintain a repeatable process. The OmniCure R2000 UV Radiometer can be combined with the OmniCure S2000 Elite/ S2000 UV Spot Curing System to provide a complete curing station with unmatched control and repeatability. Special electronics built into the R2000 UV Radiometer also allow for the connection of custom sensors that measure light energy directly at the cure site or within cure ring bonding fixtures.

Part Number	Description
010-00208	OmniCure R2000 Radiometer
019-01033	Radiometer lamp output adapter
019-01041	Proximity measurement adapter
019-01042	Light Guide Adapter, 8 mm (Green)
019-01043	Light Guide Adapter, 2 mm (Gold)
019-01050	Light Guide Adapter, 3 mm (Red)
019-01051	Light Guide Adapter, 5 mm (Blue)



R2000

OmniCure Cure Site Radiometer

The OmniCure UV Cure Site Radiometer provides ultimate process control by measuring the output power of a light guide or optical accessory directly at the bonding site.

Part Number	Description
010-00261R	Cure Site Radiometer, Single Detector System Includes: Cure Site Detector (010-00255R) and Detector Controller (010-00265R)



Cure Site Radiometer

OmniCure Cure Ring Radiometer

UV Radiometer Designed for Cure Ring Fixtures

The OmniCure UV Cure Ring Radiometer complements an OmniCure Cure Ring fixture to provide the most accurate form of process control for precision manufacturing. By enabling the output power from the Cure Ring to be measured directly at the cure site, the UV Cure Ring Radiometer ensures an accurate and repeatable bonding process.

Part Number	Description
010-00262R	Cure Ring Radiometer (10 mm), Single Detector System Includes: Cure Ring Detector 10 mm (010-00254R) and Detector Controller (010-00256R)
010-00263R	Cure Ring Radiometer (15 mm), Single Detector System Includes: Cure Ring Detector 15 mm (010-00253R) and Detector Controller (010-00256R)



Cure Ring Radiometer

Note: Detector system is used in conjunction with the OmniCure R2000 (010-00208R) which is sold separately.

Additional Detectors to build a dual channel system:

- 010-00255R Cure Site Detector
- 010-00254R Cure Ring Detector, 10 mm
- 010-00253R Cure Ring Detector, 15 mm
- 010-00256R Cure Site Detector Controller



UV Spot Curing Accessories

UV SPOT CURING

OmniCure Stocked Light Guides

We offer a full range of liquid and fiber light guides, available in a variety of spot diameters, lengths, and configurations including bifurcated, trifurcated and quadfurcated light guides available as standard stock items. Our unique in-house custom design capabilities allow customers to request unique light guide configurations that will easily adapt to any assembly challenge. If you don't see a light guide that fits into your process, please contact us for further information.

LIQUID LIGHT GUIDES

Part Number	Description
805-00002	Liquid Fill (5 mm X 1000 mm)
805-00004	Liquid Fill (3 mm X 1000 mm)
805-00007	Liquid Fill (5 mm X 1500 mm)
805-00008	Liquid Fill (5 mm X 3000 mm)
805-00009	Liquid Fill (8 mm X 1000 mm)
805-00010	Liquid Fill (8 mm X 1500 mm)
805-00011	Liquid Fill (2 X 3 mm X 1000 mm)
805-00012	Liquid Fill (2 X 3 mm X 1500 mm)
805-00023	Liquid Fill (8 mm X 2000 mm)
805-00026	Liquid Fill (5 mm X 1000 mm), UVC Series
805-00041	Liquid Fill (8 mm X 1000 mm), UVC Series
805-00005	Liquid Fill (3 mm x 750 mm)
805-00006	Liquid Fill (5 mm x 750 mm)
805-00036	Liquid Fill (2 x 3 mm x 2000 mm)



OmniCure Liquid Light Guides provide a cost effective solution for single spot light delivery.

HIGH-POWER FIBER LIGHT GUIDES

Part Number	Description
806-00005	High Power Fiber (2 x 3 mm x 1000 mm)
806-00006	High Power Fiber (4 x 3 mm x 1000 mm)
806-00007	High Power Fiber (3 x 3 mm x 1000 mm)
806-00010	High Power Fiber (2 x 3 mm x 1500 mm)
806-00011	High Power Fiber (5 mm x 1000 mm)
806-00012	High Power Fiber (3 mm x 1000 mm)
806-00013	High Power Fiber (5 mm x 1500 mm)
806-00014	High Power Fiber (3 mm x 1500 mm)
806-00018	High Power Fiber (2 x 5 mm x 1000 mm)
806-00019	High Power Fiber (2 x 3 mm x 2000 mm)
806-00015	High Power Fiber (8 mm x 1000 mm)
806-00029	High Power Fiber (3 x 3 mm x 1500 mm)
806-00030	High Power Fiber (3 x 3 mm x 2000 mm)
806-00033	High Power Fiber (4 x 3 mm x 1500 mm)



2 legged x 2 mm x 1000 mm

The OmniCure High-Power Fiber Light Guide provides an equal distribution of light energy to multiple cure sites from a single light source.

UV Spot Curing Accessories

UV SPOT CURING

NON-STOCKED OMNICURE LIQUID LIGHT GUIDES	
Part Number	Description
805-00001	Liquid Fill (3 x 3 mm x 1000 mm)
805-00016	Liquid Fill (2 x 3 mm x 3000 mm)
805-00017	Liquid Fill (3 mm x 3000 mm)
805-00019	Liquid Fill (2 x 3 mm x 750 mm)
805-00021	Liquid Fill (5 mm x 2000 mm)
805-00022	Liquid Fill (3 mm x 1500 mm)
805-00027	ER Liquid Fill (2 x 3 mm x 1500 mm)
805-00028	ER Liquid Fill (5 mm x 1500 mm)
805-00030	ER Liquid Fill (2 x 3 mm x 1000 mm)
805-00031	ER Liquid Fill (3 mm x 1000 mm)
805-00032	ER Liquid Fill (3 mm x 1500 mm)
805-00042	ER Liquid Fill (8 mm x 1500 mm)
805-00043	ER Liquid Fill (2 x 3 mm x 2000 mm)
805-00044	ER Liquid Fill (5 mm x 2000 mm)
805-00045	Liquid Fill (5 mm x 5000 mm)
805-00046	Liquid Fill (5 mm x 6000 mm)
805-00047	Liquid Fill (8 mm x 3000 mm)
805-00048	Liquid Fill (2 x 3 mm x 1500 mm) w/ 2" LG Tip
805-00049	Liquid Fill (2 x 3 mm x 2500 mm)
805-00050	Liquid Fill (2 x 3 mm x 5000 mm)
805-00051	Liquid Fill (3 x 3 mm x 1500 mm)
805-00052	ER Liquid Fill (5 mm x 3000 mm)
805-00053	ER Liquid Fill (8 mm x 2000 mm)
805-00054	ER Liquid Fill (3 x 3 mm x 1000 mm)

Note: Light guides available upon request (10-12 week delivery time).

For custom light guides optimized to a specific applications, contact us for more information on our SR product services.



UV Spot Curing Accessories

UV SPOT CURING

NON-STOCKED OMNICURE HIGH-POWER FIBER LIGHT GUIDES

Part Number	Description
806-00016	High-Power Fiber (5 x 2 mm x 1000 mm)
806-00017	High-Power Fiber (6 x 2 mm x 1000 mm)
806-00020	High-Power Fiber Light Line, Single Leg (65 mm x 1500 mm)
806-00021	High-Power Fiber Light Line, Dual Leg (65 mm x 2000 mm)
806-00022	High-Power Fiber Light Line, Dual Leg (65 mm x 2000 mm) Includes 2 focusing lens covers
806-00023	High-Power Fiber Light Line, Single Leg (65 mm x 1500 mm) Includes 1 focusing lens cover
806-00024	High-Power Fiber (5 mm x 750 mm)
806-00025	High-Power Fiber (8 mm x 2000 mm)
806-00026	High-Power Fiber (2 x 3 mm x 3000 mm)
806-00027	High-Power Fiber (2 x 5 mm x 1500 mm)
806-00028	High-Power Fiber (2 x 5 mm x 2000 mm)
806-00031	High-Power Fiber (3 x 3 mm x 3000 mm)
806-00032	High-Power Fiber (4 x 2 mm x 1500 mm)
806-00034	High-Power Fiber (4 x 3 mm x 2000 mm)
806-00035	High-Power Fiber (5 x 2 mm x 1500 mm)
806-00036	High-Power Fiber (6 x 2 mm x 1500 mm)
806-00037	High-Power Fiber (3 mm x 2000 mm)
806-00008	High-Power Fiber (4 x 3 mm x 1000 mm)
806-00043	High-Power Fiber Light Line, Single Leg w/Dual Row Fibers (65 mm x 1500 mm)

Note: Light guides available upon request (10-12 week delivery time).



Accessories

UV SPOT CURING

OMNICURE OPTICAL ACCESSORIES	
Part Number	Description
809-00083	Quartz Rod Lens 3 mm (replaceable for 810-00044)
810-00001	Lightguide angle adapter, 90° angle for 3 mm LG
810-00002	Lightguide angle adapter, 90° angle for 5 mm LG
810-00003	Lightguide angle adapter, 90° angle for 8 mm LG
810-00011	Lightguide angle adapter, 90° angle for 5 mm LG w/single lens
810-00012	Lightguide angle adapter, 90° angle for 5 mm LG w/dual lens
810-00013	Light line assembly (50 mm x 0.1 mm)
810-00014	Large area collimating adapter dual 1" lenses for 5 mm LG
810-00016	Collimating adapter for 3 mm LG (single lens)
810-00017	Collimating adapter for 5 mm LG (single lens)
810-00041	3 mm Adjustable Collimating Adapter includes: – 3 mm light guide holder / Collimating lens / 2 thumb screws
810-00042	5 mm Adjustable Collimating Adapter includes: – 5 mm light guide holder / collimating lens / 2 thumb screws
810-00043	8 mm Adjustable Collimating Adapter includes: – 8 mm light guide holder / collimating lens / 2 thumb screws
810-00044	Focusing Lens Cover - For 65 mm Hight Power Fiber Light line
810-00048	Cure ring, slotted, 63.5 mm OD, 10 mm ID for 5 mm LG
810-00049	Cure ring, no-slot, 63.5 mm OD, 10 mm ID for 8 mm LG
810-00050	Cure ring, no slot, 63.5 mm OD, 15 mm ID for 5 mm LG
019-00108	External Filter Adapter Kit
019-01022	320-480 nm External Filter
019-01023	320-390 nm External Filter
019-01024	365 nm External Filter
019-01025	Blank External Filter
019-01026	400-500 nm External Filter



Accessories

UV SPOT CURING



OMNICURE GENERAL ACCESSORIES	
Part Number	Description
014-00070R	Foot Switch (audio jack)
018-00199R	Power cord, European, shielded
018-00200R	Power cord, North American, shielded
018-00203R	Power cord, UK, shielded
018-00577R	Category 5e Shielded Network Cable (2m)
018-00579R	Shielded Y-Splitter Power Cord
019-00052	Light guide cleaning kit*
019-00090R	Protective End Cap, 3 mm (Red)
019-00091R	Protective End Cap, 5 mm (Blue)
019-00092R	Protective End Cap, 8 mm (Green)
019-01010	Light guide locking kit**
854-00001R	Safety glasses, UV protection gray, CE rated

Note: *Includes: 100x Lens Tissue Sheets; 20x Pre-saturated Optical Tissues; 20x Optical Foam Swabs; 1x 250mL Isopropanol Wash Bottle (empty).

**Use with dual liquid light guides.

OMNICURE UV LAMPS	
Part Number	Description
012-64000R	Standard Spare 200W Lamp for S2000 and S1500 (for 010-00148R, 010-00162R, 010-00224R and 010-00225R)
012-65000R	Spare 200W Lamp for Surface Curing for S2000 (for 010-00163R)
012-68000R	S2000 Elite Lamp Module
012-69000R	S2000 Elite Lamp Module - Surface Cure
012-60850	Standard Spare 100W Lamp for S1000, Novacure N2100 and Acticure
012-60650	Spare Novacure Lamp for models N2001-A1, N2001-A, N2001, N2000

OMNICURE S SERIES COMPATIBILITY				
	S2000 Elite	S1500 Pro	S2000 XLA	S1500
Replacement Lamp Part No.	Standard: 012-68000R		Standard: 012-64000R	
	Surface Cure: 012-69000R		Surface Cure: 012-65000R	N/A
Light Guides	All OmniCure Lightguides are compatible			
Radiometry	R2000 (010-00208)	N/A	R2000 (010-00208)	N/A

Note: Hg-LAMP CONTAINS MERCURY. Manage in accordance with disposal laws, see www.lamprecycle.org, call 1-800-668-8752 or contact us.



At Excelitas we recognize that every action we take has an impact on our planet, and we strive to minimize our environmental footprint by reducing waste, conserving natural resources, and supporting a circular economy. Visit www.excelitas.com/our-corporate-responsibilities to learn more.

LX Series

UV LED SPOT CURING

OmniCure LX500 V2

- Outstanding optical stability with Intelli-Lamp LED technology
- Exceptionally high peak irradiance for increased curing performance
- Calibration utility to maintain long term stability of UV light output
- Unparalleled process control with StepCure 2.0
- Real-time programming and data logging via Micro SD card

V2 CONTROLLERS AND V3 LED HEADS

Part Number	Description
010-00520R	OmniCure LX500-2 V2 Controller 2-Channel
010-00521R	OmniCure LX500-4 V2 Controller 4-Channel
019-00398R	LX500 365 nm x 55 mm UV HEAD HDMI V3 Includes clamp sub-assy (p/n 019-00087R)
019-00399R	LX500 365 nm x 125 mm UV HEAD HDMI V3 clamp sub-assy not included
019-00400R	LX500 385 nm x 125 mm UV HEAD HDMI V3 Includes clamp sub-assy (p/n 019-00087R)
019-00401R	LX500 385 nm X 125 mm UV HEAD HDMI V3 Includes clamp sub-assy not included
019-00402R	LX500 395 nm x 55 mm UV HEAD HDMI V3 Includes clamp sub-assy (p/n 019-00087R)
019-00403R	LX500 395 nm x 125 mm UV HEAD HDMI V3 Includes clamp sub-assy not included
019-00404R	LX500 405 nm x 55 mm UV HEAD HDMI V3 Includes clamp sub-assy (p/n 019-00087R)
019-00405R	LX500 405 nm x 125 mm UV HEAD HDMI V3 Clamp sub-assy not included



LX500 V2

Features & Benefits

Outstanding Optical Stability

Proprietary Intelli-Lamp LED technology that monitors LED head temperature, lifetime data and automatically maintains optical stability +/- 5% during an exposure

Calibration/Radiometry

Integrated radiometer for quick calibration and accurate measurement of light intensity

Allows operators to efficiently set and measure the peak irradiance accurately and consistently in a UV process within a manufacturing environment

Controller Configuration

Newly designed 2.4 inch full color LCD with flexibility to control using a four way keypad, foot pedal, PLC or USB

Micro SD

Intuitive programming and error logging in real-time



LX500 V2 Accessories

UV SPOT SPOT CURING

OmniCure LX500 V2 - Focusing Lenses for V3 LED Heads

Part Number	Description
810-00053R	3 mm Focusing Lens for LED Heads
810-00054R	6 mm Focusing Lens for LED Heads
810-00060R	8 mm Focusing Lens for LED Heads
810-00061R	10 mm Focusing Lens for LED Heads
810-00066R	12 mm Focusing Lens for LED Heads
810-00078R	5 mm Cylindrical Lens for LED Heads

Note: Lenses are compatible with all V3 heads.



LED Head

OmniCure LX500 V2 - Extension Cables, Adapters and Mounting Clamps

Extension Cables

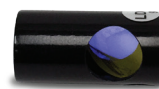
Extension cables allow manufacturing process engineers to accommodate applications where the UV curing station needs to be further away from the controller.

Part Number	Description
018-00642R	LX500 HDMI LED Head Extension Cable, 1m
018-00643R	LX500 HDMI LED Head Extension Cable, 3m
018-00644R	LX500 HDMI LED Head Extension Cable, 5m
018-00645R	LX500 HDMI LED Head Extension Cable, 10m
018-00651R	Cable Assembly - LX400 UV LED Head to HDMI LX500 Controller Adapter



Cable Assembly

Adapters	
810-00083R	90 deg Adapter, 6 mm spot, for LED Heads
810-00084R	90 deg Adapter, 8 mm spot, for LED Heads
810-00085R	90 deg Adapter, 10 mm spot, for LED Heads



Angle Adapter

Additional LED head mounting clamps are available to order. LED head mounting clamps provide secure, precise fixtures and lower LED head temperatures for longer life operation.

Mounting Clamps

Part Number	Description
019-00087R	Mounting clamp/heat sink (includes an Allen key)



Mounting Clamp

LS200 Radiometer

UV SPOT CURING

OmniCure LS200 Radiometer

Radiometry is an essential technique for measuring the light output from a UV curing system in order to maintain a precise and repeatable UV curing process. The ability to accurately measure and calibrate light intensity in UV LED spot curing is a critical aspect to controlling a UV curing process but can be challenging for UV assembly manufacturers. UV measuring systems must capture the narrow beam at the center of a detecting sensor at an exact focal height in order to determine the peak irradiance.

We offer a range of radiometric and calibration devices to allow users to efficiently and accurately measure and calibrate the peak irradiance or optical power in an assembly manufacturing environment directly with an LX500 controller or remotely with a Light Meter System (LM2011 + LS200).

Two options for measuring and calibrating UV light output are available to meet the demands of your manufacturing process, Irradiance (W/cm²) using the OmniCure LS200 or Optical Power (W) using the OmniCure LS200P. Unmatched control and repeatability can be achieved when used with an OmniCure Beam Positioning Kit and LX500 controller.



LS200 Light meter system
Part # 019-00427R

LS200 Technical Specifications

Measurement Range	Irradiance: 50 mW/cm ² to 40 W/cm ² Power: 1 mW to 2000 mW
Accuracy	+/- 10%
Resolution	Irradiance: 1 mW/cm ² Power: 1 mW
Calibration Cycle	One Year
Battery Life	Two Years, Typical (intermittent use)
Operating Temperature Range	Ambient to 40 °C
Certification	Complies with IEC, Canadian and US Standards, RoHS compliant
Functions	Peak Hold, Power On/Off, λ nm (Wavelength selection), Power/Irradiance
Traceability	NRC Traceable Calibration
Sensor Dimension (LxWxH)	75 mm x 25 mm x 11.95 mm
Meter Dimension (LxWxH)	165 mm x 100 mm x 44 mm

LS200 Systems and Accessories

Part Number	Description
019-00412R	LS200 Calibration Kit - Irradiance Includes LS200 Light Sensor and Positioning Device for V3 Heads
019-00414R	LS200 Calibration Kit - Power Includes LS200P Light Sensor and Positioning Device for V3 Heads
019-00413R	LS200 LED Light Sensor Only - Irradiance
019-00415R	LS200 LED Light Sensor Only - Power
019-00409R	Beam Positioning Kit (BPK) for V3 UV LED Heads
019-00131R	Beam Positioning Kit (BPK) for MAX UV LED Heads
019-00427R	LS200 Light Meter System Includes LM2011 Light Meter and LS200 Sensor



AC Series

UV LED AREA CURING

OmniCure AC SERIES

UV LED Area Curing Systems for Adhesives, Coatings & Inks

Designed for a broad range of applications and substrate widths, OmniCure air-cooled AC Series UV LED curing systems deliver a unique solution with high power UV output/ low temperature curing, and exceptional uniformity for outstanding throughput performance and increased production yields. The AC Series is available in various form factors and wavelengths including 365 nm, 385 nm, 395 nm and 405 nm. Utilizing high output LEDs and customizable optics to achieve industry-leading peak irradiance at long working distances, the AC series provides the ultimate flexibility for a wide range of UV curing processes and applications.

Full System Configuration Ordering Guide

An OmniCure UV LED curing system is typically comprised of a UV LED head, paired with an appropriate SC Series power supply, cables, and an optional PLC controller for easy integration and testing. The following configuration guide can be used to build a solution that will suit your needs.



1-Refer to pages 17-26.

2-4 Refer to page 28

AC Series

UV LED AREA CURING

OmniCure AC2 SERIES

Small Area UV LED Curing

The OmniCure AC275 and OmniCure AC2110 air-cooled UV LED curing systems are compact and ideal for applications with space constraints. The units are designed with advanced front-end optics to provide high peak irradiance and exceptional uniformity.

Part Number	Description
365 nm Products	
019-00251R-04	AC275-365 UV LED Head: 3 W/cm ² , 10x75 mm @365 nm
019-00270R-04	AC275F-365 UV LED Head: 2 W/cm ² , 10x75 mm @365 nm
019-00271R-04	AC2110-365 UV LED Head: 3 W/cm ² , 10x114 mm @365 nm
019-00272R-04	AC2110F-365 UV LED Head: 2 W/cm ² , 10x114 mm @365 nm
395 nm Products	
019-00236R-04	AC275-395 UV LED Head: 4 W/cm ² , 10x75 mm @395 nm
019-00263R-04	AC275F-395 UV LED Head: 4 W/cm ² , 10x75 mm @395 nm
019-00239R-04	AC2110-395 UV LED Head: 4 W/cm ² , 10x114 mm @395 nm
019-00254R-04	AC2110F-395 UV LED Head: 4 W/cm ² , 10x114 mm @395 nm
AC2 Series Accessories	
019-00195R	650W, single output Power Supply Unit
019-00199R	750W, dual output Power Supply Unit
018-00624R	AC2 Series Power / Control Cable
019-00214R	PLC2000 External PLC Controller (includes HD15 cable)



Applications:

The AC275 and AC2110 systems are ideally suited for a wide range of printing, medical device, electronic and optoelectronic applications such as the following:

Printing: Pinning, 3D printing, coding, product marking, serial numbers, posters and signage and packaging

Medical: Anesthesia masks, blood bags, catheters, contact lens, Endoscopes, filter sets, insulin pens, syringes and tube sets

Electronics: Camera modules, chip on glass, connectors, display bonding, flex circuit assembly, hard disk drives, lens bonding, micro-speakers and OLED display manufacturing



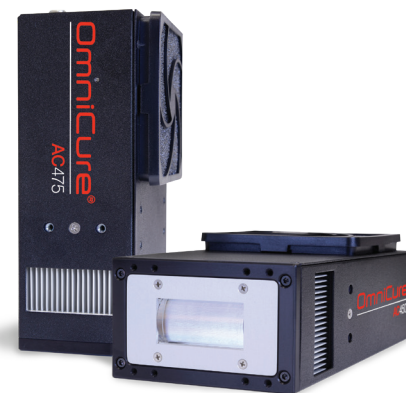
AC Series

UV LED AREA CURING

OmniCure AC4 SERIES

Small Area UV LED Curing

The OmniCure AC450/P and AC475/P air-cooled UV LED small area curing systems provide high irradiance (8W/ cm²) at flexible working distances.



Part Number	Description
365 nm Products	
019-00194R-04	AC450-365 UV LED Head: 8 W/cm ² , 25x50 mm @365 nm
019-00230R-04	AC450P-365 UV LED Head: 8 W/cm ² , 25x50 mm @ 365 nm
019-00193R-04	AC475-365 UV LED Head: 8 W/cm ² , 25x75 mm @365 nm
019-00231R-04	AC475P-365 UV LED Head, 8 W/cm ² , 25x75 mm @365 nm
395 nm Products	
019-00191R-04	AC450-395 UV LED Head, 8 W/cm ² , 25x50 mm @395 nm
019-00228R-04	AC450P-395 UV LED Head: 8 W/cm ² , 25x50 mm @ 395 nm
019-00192R-04	AC475-395 UV LED Head, 8 W/cm ² , 25x75 mm @395 nm
019-00229R-04	AC475P-395 UV LED Head, 8 W/cm ² , 25x75 mm @395 nm
AC4 Series Accessories	
019-00195R	650W, single output Power Supply Unit (PSU)
018-00559R	5m, 5W5 DC power cable (For AC4, AC5, AC7 & AC8F+ Only)
019-00214R	PLC2000 External PLC Controller (includes HD15 cable)
010-00329R*	CV300 Conveyor System, 300 mm-wide belt. Comes complete with power cord.
018-00540R	HD15 M-F PLC Control cable, 15FT, 5m
019-00203R	Kit, window protector, AC450/AC550
019-00204R	Kit, window protector, AC475/AC575
019-00232R	Protective Window - AC4/AC5 Series
019-00209R	AC4/AC5 Series 100PPI Air Filter Kit, 10-Pack
019-00208R	AC4/AC5 Series Air Deflector Kit

* Available only in NA.

Applications:

The AC450/P and AC475/P systems are ideally suited for the many medical device assembly and electronic applications requiring high throughput, low temperature curing of parts including:

Medical: Anesthesia masks, blood bags, catheters, contact lens, endoscopes, filter sets, insulin pens, syringes and tube sets

Electronics: Camera modules, Flex circuit assembly, chip on glass, hard disk drives, connectors, lens bonding, micro-speakers and OLED manufacturing

Printing: Coding, labels, product marking and serial numbers

AC Series

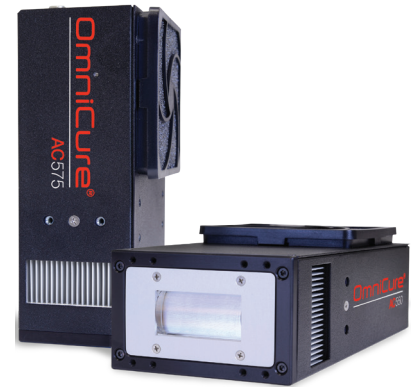
UV LED AREA CURING

OmniCure AC5 SERIES

Small Area UV LED Curing

Designed with a unique combination of high output LEDs and custom optics that deliver up to 14 W/cm², the AC5 air-cooled UV LED system provides high irradiance at flexible working distances, enabling manufacturers to achieve outstanding productivity with reduced running costs.

The air-cooled, compact LED head design eliminates the need for external cooling or ozone extraction thus greatly simplifying integration. The AC5 Series UV LED curing systems can also be mounted in any orientation, with different wavelengths available for optimal flexibility.



Part Number	Description
395 nm Products	
019-00279R-04	AC550-395 UV LED Head: 14 W/cm ² , 25x50 mm @395 nm
019-00281R-04	AC550P-395 UV LED Head: 14 W/cm ² , 25x50 mm @395 nm
019-00280R-04	AC575-395 UV LED Head, 14 W/cm ² , 25x75 mm @395 nm
019-00282R-04	AC575P-395 UV LED Head, 14 W/cm ² , 25x75 mm @395 nm
405 nm Products	
019-00421R-04-04	AC575-405 UV LED Head, 15 W/cm ² , 25x75 mm @405 nm
AC5 Series Accessories	
019-00195R	650W, single output Power Supply Unit (PSU)
018-00559R	5m, 5W5 DC power cable (For AC4, AC5, AC7 & AC8F+ Only)
019-00214R	PLC2000 External PLC Controller (includes HD15 cable)
010-00329R*	CV300 Conveyor System, 300 mm-wide belt. Comes complete with power cord.
018-00540R	HD15 M-F PLC Control cable, 15FT, 5m
019-00203R	Kit, window protector, AC450/AC550
019-00204R	Kit, window protector, AC475/AC575
019-00232R	Protective Window - AC4/AC5 Series
019-00209R	AC4/AC5 Series 100PPI Air Filter Kit, 10-Pack
019-00208R	AC4/AC5 Series Air Deflector Kit

* Available only in N.A.

Applications:

The AC550/P and AC575/P systems are ideally suited for the many medical device and electronic assembly applications requiring high throughput, low temperature curing of often plastic parts and printing applications including:

Medical: Anesthesia masks, blood bags, catheters, contact lens, endoscopes, filter sets, insulin pens, syringes and tube sets

Electronics: Camera modules, chip on glass, connectors, display bonding, flex circuit assembly, hard disk drives, lens bonding and micro-speakers

Printing: Coding, labels, product marking and serial numbers

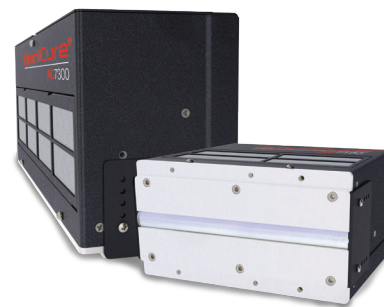
Industrial: Wood coatings, solar panels, UV film lamination, lens bonding, pressure sensitive adhesives



AC Series

UV LED AREA CURING

OmniCure AC7 SERIES



Large Area UV LED Curing

Designed with a unique combination of high output LEDs and custom optics, these air-cooled UV LED systems provide high irradiance at flexible working distances, enabling manufacturers to achieve outstanding productivity with reduced operating costs.

The OmniCure AC7150 and AC7300 provide exceptional uniformity over the full curing area for even and consistent curing. For even greater flexibility in curing larger parts, multiple systems can be joined together without comprising uniformity between systems.

Part Number	Description
365 nm Products	
019-00197R-04	AC7150-365 UV LED Head, 3 W/cm ² , 15x150 mm @365 nm
019-00187R-04	AC7300-365 UV LED Head, 3 W/cm ² , 15x300 mm @365 nm
395 nm Products	
019-00198R-04	AC7150-395 UV LED Head, 5 W/cm ² , 15x150 mm @395 nm
019-00196R-04	AC7300-395 UV LED Head, 5 W/cm ² , 15x300 mm @395 nm
AC7 Series Accessories	
019-00195R	650W, single output Power Supply Unit (PSU)
019-00199R	750W, dual output Power Supply Unit (PSU)
019-00186R	1000W, dual output Power Supply Unit (PSU)
018-00559R	5m, 5W5 DC power cable (For AC4, AC5, AC7 & AC8F+ Only)
019-00214R	PLC2000 External PLC Controller (includes HD15 cable)
018-00540R	HD15 M-F PLC Control cable, 15FT, 5m
010-00329R*	CV300 Conveyor System, 300 mm-wide belt. Comes complete with power cord. (*Only available for sale in NA)
020-00869	AC7150 replacement air filters, qty 1
020-00860	AC7300 replacement air filters, qty 1

* Available only in NA.

Applications:

The OmniCure AC7150 and AC7300 systems are ideally suited for the many medical device and electronic assembly applications requiring high throughput, low temperature curing of often plastic parts and printing applications including:

Medical: Anesthesia masks, blood bags, catheters, contact lens, endoscopes, filter sets, hydrogels, insulin pens, syringes and tube sets

Electronics: camera modules, chip on glass, display bonding, flex circuit assembly, hard disk drives micro-speakers, optical film coating, touch panels and OLED manufacturing

Automotive: Automotive filers, automotive gaskets and sealing and sealants

Optical Fiber: Fiber coating, fiber connectors and fiber ribbon

Industrial: Lens bonding, pressure sensitive adhesives, solar panels and UV film and lamination

AC Series

UV LED AREA CURING

OmniCure AC8 SERIES



Large Area UV LED Curing

The OmniCure AC8150/P, AC8225/P and AC8300/P air-cooled UV LED curing systems are designed with advanced custom front-end optics to provide high-powered, high peak irradiance and exceptional uniformity at different working distances. These systems deliver over 8 W/cm² peak irradiance for fast, even curing at long working distances. “P” versions of the AC8 Series have enhanced optics to optimize the dose for short working distances required by print applications. By adapting the output to support the process requirements of the industry, the AC8 Series product portfolio can be applicable for a range of varying applications with different process needs.

Part Number	Description
-------------	-------------

365 nm Products

019-00218R-04	AC8150-365 UV LED Head: 8 W/cm ² , 25x150 mm @365 nm
019-00276R-04	AC8150P-365 (Print) UV LED Head: 8 W/cm ² , 25x150 mm @365 nm
019-00219R-04	AC8225-365 UV LED Head: 8 W/cm ² , 25x225 mm @365 nm
019-00277R-04	AC8225P-365 (Print) UV LED Head: 8 W/cm ² , 25x225 mm @365 nm
019-00220R-04	AC8300-365 UV LED Head: 8 W/cm ² , 25x300 mm @365 nm
019-00278R-04	AC8300P-365 (Print) UV LED Head: 8 W/cm ² , 25x300 mm @365 nm

385 nm Products

019-00261R-04	AC8150-385 UV LED Head, 8 W/cm ² , 25x150 mm @385 nm
019-00266R-04	AC8150P-385 (Print) UV LED Head, 8 W/cm ² , 25x150 mm @385 nm
019-00260R-04	AC8225-385 UV LED Head, 8 W/cm ² , 25x225 mm @385 nm
019-00267R-04	AC8225P-385 (Print) UV LED Head, 8 W/cm ² , 25x225 mm @385 nm
019-00262R-04	AC8300-385 UV LED Head, 8 W/cm ² , 25x300 mm @385 nm
019-00268R-04	AC8300P-385 (Print) UV LED Head, 8 W/cm ² , 25x300 mm @385 nm

Part Number	Description
-------------	-------------

395 nm Products

019-00217R	AC8150-395 UV LED Head, 8 W/cm ² , 25x150 mm @395 nm
019-00221R	AC8150P-395 (Print) UV LED Head, 8 W/cm ² , 25x150 mm @395 nm
019-00212R	AC8225-395 UV LED Head, 8 W/cm ² , 25x225 mm @395 nm
019-00222R	AC8225P-395 (Print) UV LED Head, 8 W/cm ² , 25x225 mm @395 nm
019-00216R	AC8300-395 UV LED Head, 8 W/cm ² , 25x300 mm @395 nm
019-00244R	AC8300P-395 (Print) UV LED Head, 8 W/cm ² , 25x300 mm @395 nm

405 nm Products

019-00273R	AC8150-405 UV LED Head, 8 W/cm ² , 25x150 mm @405 nm
019-00290R	AC8150P-405 (Print) UV LED Head, 8 W/cm ² , 25x150 mm @405 nm
019-00274R	AC8225-405 UV LED Head, 8 W/cm ² , 25x225 mm @405 nm
019-00291R	AC8225P-405 (Print) UV LED Head, 8 W/cm ² , 25x225 mm @405 nm
019-00275R	AC8300-405 UV LED Head, 8 W/cm ² , 25x300 mm @405 nm
019-00292R	AC8300P-405 (Print) UV LED Head, 8 W/cm ² , 25x300 mm @405 nm



AC Series

UV LED AREA CURING

OmniCure AC8 SERIES

Large Area UV LED Curing

AC8 Series Accessories	
019-00211R	2000W, dual output Power Supply Unit (PSU)
019-00213R	3000W, quadruple output Power Supply Unit (PSU)
018-00559R	5m, 5W5 DC power cable (For AC4, AC5, AC7 & AC8F+ Only)
018-00595R	5m, 5C5W5 DC cable (For AC8 & AC9 Series)
019-00214R	PLC2000 External PLC Controller (includes HD15 cable)
010-00329R*	CV300 Conveyor System, 300 mm-wide belt. Comes complete with power cord.
018-00540R	HD15 M-F PLC Control cable, 15FT, 5m
020-00922	AC8150P/AC9150P AR Coated Replacement Window
020-00923	AC8225P/AC9225P AR Coated Replacement Window
020-00924	AC8300P/AC9300P AR Coated Replacement Window
020-00900	AC8150/AC9150 replacement air filters, qty 1
020-00901	AC8225/AC9225 replacement air filters, qty 1
020-00899	AC8300/AC9300 replacement air filters, qty 1

* Available only in NA.

Applications:

The AC8150/AC8150P, AC8225/AC8225P & AC8300/AC300P systems from are ideally suited for a wide range of medical device, electronic and opto-electronics, and printing applications such as the following:

Medical: Anesthesia masks, blood bags, catheters, contact lens, endoscopes, filter sets, insulin pens, syringes and tube sets

Electronics: Camera modules, chip on glass, connectors, display bonding, wafer tape removal, flex circuit assembly, hard disk drives, lens bonding, micro-speakers and OLED manufacturing

Printing: Coding, labels, product marking, serial numbers, posters and signage, packaging and 3D printing



AC Series

UV LED AREA CURING

OmniCure AC8-HD SERIES

High Dose Large Area UV LED Curing

The OmniCure AC8-HD Series of products bring air-cooled UV LED curing to the next level. These systems deliver an outstandingly high optical dose and are designed with innovative technology that enables unbeatable uniformity of output across the irradiation area. Offering three standard cure widths – 6" (150 mm), 9" (225 mm), and 12" (300 mm), these units can be adjoined to customize and achieve countless curing sizes without any compromise in uniformity.

The AC8-HD systems deliver over 15 W/cm² peak irradiance and nearly double the dose of the AC8 Series of products, making these systems ideal for applications that demand high dosage.

Part Number	Description
385 nm Products	
019-00320R-04	AC8150P-HD-385 nm UV LED Head, 15 W/cm ² , 30x150 mm
019-00321R-04	AC8225P-HD-385 nm UV LED Head, 15 W/cm ² , 30x225 mm
019-00322R-04	AC8300P-HD-385 nm UV LED Head, 15 W/cm ² , 30x300 mm
395 nm Products	
019-00310R-04	AC8150P-HD-395 nm UV LED Head, 15 W/cm ² , 30x150 mm
019-00311R-04	AC8225P-HD-395 nm UV LED Head, 15 W/cm ² , 30x225 mm
019-00312R-04	AC8300P-HD-395 nm UV LED Head, 15 W/cm ² , 30x300 mm
405 nm Products	
019-00323R-04	AC8150P-HD-405 nm UV LED Head, 15 W/cm ² , 30x150 mm
019-00324R-04	AC8225P-HD-405 nm UV LED Head, 15 W/cm ² , 30x225 mm
019-00325R-04	AC8300P-HD-405 nm UV LED Head, 15 W/cm ² , 30x300 mm
Accessories	Description
019-00213R	3000W, quadruple output Power Supply Unit (PSU)
018-00595R	5m, 5C5W5 DC cable (For AC8150P-HD)
018-00661R	5m, 5CW5 8AWG DC power cable (For AC8-HD Series)
019-00214R	PLC2000 External PLC Controller (includes HD15 cable)
010-00329R*	CV300 Conveyor System, 300 mm-wide belt. Comes complete with power cord. (Only available for sale in NA)
018-00540R	HD15 M-F PLC Control cable, 15FT, 5m
020-00967	AC8150P-HD AR Coated Replacement Window
020-00968	AC8225P-HD AR Coated Replacement Window
020-00969	AC8300P-HD AR Coated Replacement Window
020-00899	AC8300/AC9300 replacement air filters, qty 1
020-00900	AC8150/AC9150 replacement air filters, qty 1
020-00901	AC8225/AC9225 replacement air filters, qty 1

NOTE: Due to the added power of the AC8300P-HD, the SC3000 cannot support the system. A custom SR PSU or off-the-shelf power supply >3.5KW is required.

* Available only in NA



Applications:

The AC8150P-HD, AC8225P-HD, and AC8300P-HD are ideally suited for a wide range of medical, industrial, electronics, printing and coating applications such as the following

Printing: Wide format graphics, coding, labels, product marking serial numbers, posters and signage, packaging, screen, bottle printing

Medical: Anesthesia masks, blood bags, catheters, contact lens, endoscopes filter sets, insulin pens, syringes, tube sets

Electronics: Camera modules, chip on glass, connectors, display bonding, OLED display wafer tape removal, flex circuit assembly, hard disk drives, lens bonding, micro-speakers

Industrial: Wood coatings solar panels, UV film lamination, lens bonding, pressure sensitive adhesives



AC Series

UV LED AREA CURING

OmniCure AC9 SERIES

Large Area UV LED Curing

The OmniCure AC9 Series are high-power UV LED Curing Systems delivering over 14 W/cm² peak irradiance for fast curing of inks, adhesives and coatings. The AC9 Series' innovative design features a high-performing, small form-factor, air-cooled solution to enable fast line speeds in industrial manufacturing and printing.

Innovative UV LED control technology enables control of individual LED module output to provide exceptional uniformity for even curing over the entire area. The scalable design allows for multiple heads to be adjoined for customization and flexibility without compromising output uniformity

Part Number	Description
385 nm Products	
019-00315R-04	AC9150-385 UV LED Head: 14 W/cm ² , 25x150 mm @385 nm
019-00316R-04	AC9225-385 UV LED Head, 14 W/cm ² , 25x225 mm @385 nm
019-00317R-04	AC9300-385 UV LED Head, 14 W/cm ² , 25x300 mm @385 nm
395 nm Products	
019-00241R-04	AC9150-395 UV LED Head: 14 W/cm ² , 25x150 mm @395 nm
019-00252R-04	AC9150P-395 (Print) UV LED Head, 14 W/cm ² , 25x150 mm @395 nm
019-00255R-04	AC9225-395 UV LED Head, 14 W/cm ² , 25x225 mm @395 nm
019-00253R-04	AC9225P-395 (Print) UV LED Head, 14 W/cm ² , 25x225 mm @395 nm
019-00247R-04	AC9300-395 UV LED Head, 14 W/cm ² , 25x300 mm @395 nm
019-00246R-04	AC9300P-395 (Print) UV LED Head, 14 W/cm ² , 25x300 mm @395 nm
019-00356R-04	AC9225F-395 (Fiber) UV LED Head, 20 W/cm ² , 15x225 mm @395 nm



Applications:

The AC9150/AC9150P, AC9225/AC9225P & AC9300 and AC9300P systems are ideally suited for a wide range of applications such as digital printing, industrial and electronics manufacturing, touch panel/display, solar panel, conformal coatings and automotive.

Printing: Wide format graphics, coding, labels, product marking, serial numbers, posters and signage, packaging, screen and bottle printing

Medical: Anesthesia masks, blood bags, catheters, contact lens, endoscopes, filter sets, insulin pens, syringes and tube sets

Electronic: Camera modules, chip on glass, connectors, display bonding, wafer tape removal, flex circuit assembly, hard disk drives, lens bonding and micro-speaker

Industrial: Wood coatings, solar panels, UV film lamination, lens bonding, pressure sensitive adhesives, cable marking and ribboning

AC Series

UV LED AREA CURING

OmniCure AC9 SERIES

Large Area UV LED Curing

AC9 Series Accessories	
019-00211R	2000W, dual output Power Supply Unit (PSU)
019-00213R	3000W, quadruple output Power Supply Unit (PSU)
018-00595R	5m, 5C5W5 DC cable (For AC8 & AC9 Series)
019-00214R	PLC2000 External PLC Controller (includes HD15 cable)
010-00329R*	CV300 Conveyor System, 300 mm-wide belt. Comes complete with power cord. (Only available for sale in NA)
018-00540R	HD15 M-F PLC Control cable, 15FT, 5m
020-00922	AC8150P/AC9150P AR Coated Replacement Window
020-00923	AC8225P/AC9225P AR Coated Replacement Window
020-00924	AC8300P/AC9300P AR Coated Replacement Window
020-00900	AC8150/AC9150 replacement air filters, qty 1
020-00901	AC8225/AC9225 replacement air filters, qty 1
020-00899	AC8300/AC9300 replacement air filters, qty 1

* Available only in NA.



AC Series

UV LED AREA CURING

OmniCure AC9225-F



Air-Cooled UV LED Solutions for Fiber Curing Applications

OmniCure AC9225-F UV LED curing systems are specifically designed for fiber curing applications. Featuring an innovative optical design to enhance output and optimize delivery of UV onto the fiber, the OmniCure AC9225-F provides an air-cooled, high output solution to meet the market demand for increased process speeds. The AC9225-F delivers up to 88 W/cm² peak irradiance at the fiber in typical face-to-face AC9225-F configuration) and 10 to 18 mm working distance. Featuring a replaceable outer window, OmniCure AC9225-F fiber curing solutions enable customers to easily scale production speeds without complex changes in integration. These systems utilize innovative LED control technology to provide exceptional uniformity and enable multiple systems to be joined together to increase the cure area width while maintaining uniformity across all systems.

OmniCure AC9225-F UV LED fiber curing systems reduce electrical power consumption by up to 60% compared with traditional arc lamp systems for exceptional cost savings and no compromises in line speed. With over 40,000 hours of LED lifetime and no replacement parts, maintenance costs are even further reduced.

Part Number	Description
019-00356R-04	AC9225F-395 (Fiber) UV LED Head, 20 W/cm ² , 15x225 mm @395 nm
019-00429R-04	AC9225F-395 (Fiber) UV LED Head with RS485, 20 W/cm ² , 15x225 mm @395 nm

Accessories

019-00211R	2000W Dual output power supply Unit (PSU)
019-00213R	3000W Quadruple power supply unit (PSU)
018-00661R	5m, 5C5W5 8AWG DC cable (For AC8-HD Series)
010-00329R	CV300 Conveyor System, 300 mm-wide belt. Comes complete with power cord. (Only available for sale in NA)
018-00540R	HD15 M-F PLC Control cable, 15FT, 5m
020-00967	AC8150P-HD AR Coated Replacement Window
020-00968	AC8225P-HD AR Coated Replacement Window
020-00969	AC8300P-HD AR Coated Replacement Window
020-00899	AC8300/AC9300 replacement air filters, qty 1
020-00900	AC8150/AC9150 replacement air filters, qty 1
020-00901	AC8225/9225 replacement air filters, qty 1
018-00559R	5m, 5W5 DC power cable (For AC4, AC5, AC7 & AC8F+ Only)
018-00595R	5m, 5C5W5 DC cable (For AC8 & AC9 Series)
019-00214R	PLC2000: External PLC controller unit

SC Series Compatibility – Number of UV LED Heads Supported

Product	SC0650	SC0750	SC1000	SC2000	SC3000
AC9225-F*	N/A	N/A	N/A	1	2

*AC9225-F must use 018-00595R DC power cable.

AC Series Bundle Packages

AC4 Series Bundle Packages:

010-00330R-04 AC450-365 UV LED Curing System	AC450-365 UV LED Head: 8 W/cm ² , 25x50 mm @365 nm SC0650: 650W System Controller (PSU) 5W5-5: 5m DC Cable PLC2000 External PLC Controller
010-00331R-04 AC450-395 UV LED Curing System	AC450-395 UV LED Head: 8 W/cm ² , 25x50 mm @395 nm SC0650: 650W System Controller (PSU) 5W5-5: 5m DC Cable PLC2000 External PLC Controller
010-00332R-04 AC475-365 UV LED Curing System	AC475-365 UV LED Head: 8 W/cm ² , 25x75 mm @365 nm SC0650: 650W System Controller (PSU) 5W5-5: 5m DC Cable PLC2000 External PLC Controller
010-00333R-04 AC475-395 UV LED Curing System	AC475-395 UV LED Head: 8 W/cm ² , 25x75 mm @395 nm SC0650: 650W System Controller (PSU) 5W5-5: 5m DC Cable PLC2000 External PLC Controller

AC7 Series Bundle Packages:

010-00334R-04 AC7150-365 UV LED Curing System	AC7150-365 UV LED Head: 3 W/cm ² , 15x150 mm @365 nm SC0650: 650W System Controller (PSU) 5W5-5: 5m DC Cable PLC2000 External PLC Controller
010-00335R-04 AC7150-395 UV LED Curing System	AC7150-395 UV LED Head: 5 W/cm ² , 15x150 mm @395 nm SC0650: 650W System Controller (PSU) 5W5-5: 5m DC Cable PLC2000 External PLC Controller
010-00336R-04 AC7300-365 UV LED Curing System	AC7300-365 UV LED Head: 3 W/cm ² , 15x300 mm @365 nm SC0750: 750W System Controller (PSU) 5W5-5: 5m DC Cable PLC2000 External PLC Controller
010-00337R-04 AC7300-395 UV LED Curing System	AC7300-395 UV LED Head: 5 W/cm ² , 15x300 mm @395 nm SC0750: 750W System Controller (PSU) 5W5-5: 5m DC Cable PLC2000 External PLC Controller

AC8 Series Bundle Packages:

010-00356R-04 AC8150-365 UV LED Curing System	AC8150-365 UV LED Head: 8 W/cm ² , 25x150 mm @365 nm SC2000: 2000W, dual output Power Supply Unit (PSU) 5m, 5C5W5 DC cable (For AC8 Series) PLC2000 External PLC Controller
010-00357R-04 AC8150-395 UV LED Curing System	AC8150-395 UV LED Head: 8 W/cm ² , 25x150 mm @395 nm SC2000: 2000W, dual output Power Supply Unit (PSU) 5m, 5C5W5 DC cable (For AC8 Series) PLC2000 External PLC Controller
010-00358R-04 AC8225-365 UV LED Curing System	AC8225-365 UV LED Head: 8 W/cm ² , 25x225 mm @365 nm SC2000: 2000W, dual output Power Supply Unit (PSU) 5m, 5C5W5 DC cable (For AC8 Series) PLC2000 External PLC Controller
010-00359R-04 AC8225-395 UV LED Curing System	AC8225-395 UV LED Head: 8 W/cm ² , 25x225 mm @395 nm SC2000: 2000W, dual output Power Supply Unit (PSU) 5m, 5C5W5 DC cable (For AC8 Series) PLC2000 External PLC Controller
010-00360R-04 AC8300-365 UV LED Curing System	AC8300-365 UV LED Head: 8 W/cm ² , 25x300 mm @365 nm SC3000: 3000W quadruple output Power Supply Unit (PSU) 5m, 5C5W5 DC cable (For AC8 Series) PLC2000 External PLC Controller
010-00361R-04 AC8300-395 UV LED Curing System	AC8300-395 UV LED Head: 8 W/cm ² , 25x300 mm @395 nm SC3000: 3000W quadruple output Power Supply Unit (PSU) 5m, 5C5W5 DC cable (For AC8 Series) PLC2000 External PLC Controller



Accessories

UV LED AREA CURING

OmniCure SC Series System Controllers

The OmniCure SC Series system controllers are designed specifically for OmniCure AC Series UV LED curing systems. Designed with application flexibility in mind, customers can select the system controller that best meets the needs of their particular curing application. With a small form factor, the OmniCure SC0650 is suitable for many single LED head applications with minimal existing customer infrastructure requirements and quickest commissioning time.

Part Number	Description
019-00195R	650W, single output Power Supply Unit (PSU)
019-00199R	750W, dual output Power Supply Unit (PSU)
019-00186R	1000W, dual output Power Supply Unit (PSU)
019-00211R	2000W, dual output Power Supply Unit (PSU)
019-00213R	3000W, quadruple output Power Supply Unit (PSU)

NOTE: Refer to the AC Systems Power Supply Chart for appropriate PSU for the LED Heads.



Intelligent External PLC Controllers

Power Cables

Part Number	Description
018-00559R	5m, 5W5 DC power cable (For AC4, AC5, and AC7 Only)
018-00595R	5m, 5C5W5 DC cable (For AC8 & AC9 Series)
018-00661R	5m, 5C5W5 8AWG DC cable (For AC8-HD Series)
018-00624R	5m, 5C5W5 8AWG DC cable (For AC2)

SC Series Compatibility – Number of UV LED Heads Supported

Product	SC0650	SC0750	SC1000	SC2000	SC3000
AC275/AC2110	1	2	2	2	4 ¹
AC450/AC550	1	1	2	2	4 ¹
AC475/AC575	1	1	1	2	4 ¹
AC7150	1	2	2	2	4 ¹
AC7300	N/A	1	1	2	4 ¹
AC8150/9150	N/A	N/A	N/A	1	2
AC8225/9225	N/A	N/A	N/A	1	1
AC8300/9300	N/A	N/A	N/A	N/A	1
AC9225-F	N/A	N/A	N/A	1	2
AC8150P-HD	N/A	N/A	N/A	1	1
AC8225P-HD	N/A	N/A	N/A	1 ²	1 ²

1. SC3000 has 4 DC output connectors.

2. 220-240VAC input needed.

AC8300P-HD requires off-the-shelf power supply.

Accessories

UV LED AREA CURING

OmniCure CV300 Small Volume Production Conveyor

Designed to complement the OmniCure AC Series of high power UV LED area curing systems, the OmniCure CV300 is a versatile conveyor system suitable for production, laboratory, and research and development applications.

The CV300 can handle substrates up to 310 mm (12.2") wide on its open mesh Teflon® coated fiberglass belt with an effective curing area of up to 300 mm (12") depending on the OmniCure LED system being utilized. The unique mounting design of the OmniCure CV300 conveyor allows for multiple configurations of the OmniCure AC Series high power UV LED curing systems. The length of the LED systems can be positioned perpendicular to the conveyor belt's direction of travel or in 15 degree steps towards a parallel orientation.



010-00329R (AC7300 unit shown, not included)
Only available in the USA. China Export (Not CE)

OmniCure PLC2000

Intelligent External PLC Controller for AC Series UV LED Curing Systems

The OmniCure PLC2000 is an innovative product accessory specially designed to complement the OmniCure AC Series of high power UV LED curing systems. When connected to an OmniCure AC Series UV LED Head, this multi-purpose external controller device enables the immediate ability to intelligently manage, monitor and control an LED system.

Providing unparalleled control of the OmniCure UV LED lamp systems, the PLC2000 can be used to dynamically adjust the output intensity, exposure time, and on/off capabilities while providing system information and error monitoring. With flexibility to operate the PLC2000 locally or remotely through an automated system, the portable and compact PLC controller is well suited for use in manufacturing environments, laboratory and research & development applications.



Intelligent External PLC Controller

Part Number	Description
019-00214R	PLC2000 External PLC Controller (includes HD15 cable)



AC Series

UV LED AREA CURING

OmniCure Spare Parts and Add-Ons

Part Number	Description
Cables	
018-00624R	AC2 Series Power / Control Cable
018-00559R	5m, 5W5 DC power cable (For AC4, AC5, AC7 & AC8F+ Only)
018-00595R	5m, 5C5W5 DC cable (For AC8 & AC9 Series)
018-00661R	5m, 5C5W5 8AWG DC cable (For AC8-HD Series)
PLC Controllers	
019-00214R	PLC2000 External PLC Controller (includes HD15 cable)
Conveyor	
010-00329R*	CV300 Conveyor System, 300 mm-wide belt. Comes complete with power cord.
Replacement Parts & Add-Ons	
018-00540R	HD15 M-F PLC Control cable, 15FT, 5m
019-00203R	Kit, window protector, AC450
019-00204R	Kit, window protector, AC475
019-00232R	Protective Window - AC4 Series
019-00209R	AC4 Series 100PPI Air Filter Kit, 10-Pack
019-00208R	AC4 Series Air Deflector Kit
020-00869	AC7150 replacement air filters, qty 1
020-00860	AC7300 replacement air filters, qty 1
020-00899	AC8300/9300 replacement air filters, qty 1
020-00900	AC8150/9150 replacement air filters, qty 1
020-00901	AC8225/9225 replacement air filters, qty 1
020-00922	AC8150P/AC9150P AR Coated Replacement Window
020-00923	AC8225P/AC9225P AR Coated Replacement Window
020-00924	AC8300P/AC9300P AR Coated Replacement Window
020-00967	AC8150P-HD AR Coated Replacement Window
020-00968	AC8225P-HD AR Coated Replacement Window
020-00969	AC8300P-HD AR Coated Replacement Window

* Available only in the US.

AC Series

UV LED AREA CURING

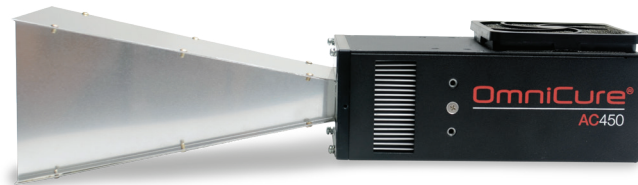
OmniCure AC Series Optical Adapters

The OmniCure AC series high power UV LED curing solutions offer optical adapters customized specifically for use with the OmniCure AC series to suit a wide range of applications and customer needs.

AC Optical Adapters attach to the front face of the OmniCure UV LED systems to convert a smaller area of high output power to a larger area, while optimizing optical power and delivering evenly distributed irradiance and uniformity. These Adapters increase the flexibility of the AC Series of products by expanding the range of applications that can be addressed.

Available in the following configurations:

- 100 mm x 100 mm
- 100 mm x 150 mm
- 70 mm x 70 mm
- 8 mm x 350 mm



* Other custom sizes available.

All optical adapters must be ordered as special requests (SRs). For more information on special requests see pages 32-33.



Custom Solutions and System Integration

UV LED Area Curing Solutions

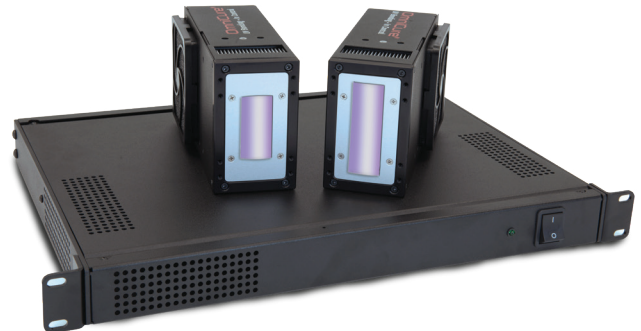
For Custom UV Applications

Excelitas Technologies is committed to working closely with our customers to develop and customize UV curing solutions tailored to their specific applications. Through working in collaboration, we leverage our technology expertise to address our customers' specific UV application requirements and deliver the right solution that helps them achieve their needs including business differentiation, improved time to market and increased flexibility.

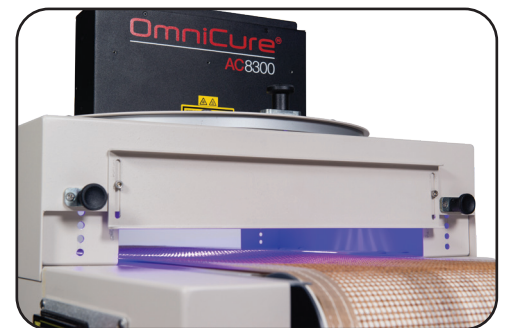
Our collaborative and custom approach to developing UV LED curing solutions helps drive key benefits for our customers including:

- Scalability and flexibility
- Robustness of application
- Protection in their investment
- Risk management
- Application performance improvement

For additional details, contact us at omnicure@excelitas.com for assistance with your custom UV application.



Small area OmniCure UV LED Curing System with SC Series Power Supply



Conveyor integration of AC Series UV LED Curing System



MPLC6 – 6 Channel LED Head Controller



Extended Warranties

OMNICURE EXTENDED WARRANTY (U.S. ONLY)

Part Number	Description
023-00001	S Series 2nd Year Extended Warranty
023-00010	AC7 Series 3rd Year Extended Warranty**
023-00002	S Series 3rd Year Extended Warranty
023-00003	S Series 4th Year Extended Warranty
023-00004	LX Series 2nd Year Extended Warranty
023-00005	LX Series 3rd Year Extended Warranty
023-00011	AC8 Series 2nd Year Extended Warranty*
023-00012	AC8 Series 3rd Year Extended Warranty**
023-00020	Radiometer 2nd Year Extended Warranty
023-00019	Radiometer 3rd Year Extended Warranty
023-00006	LX Series 4th Year Extended Warranty
023-00013	AC2 Series 2nd Year Extended Warranty*
023-00018	Radiometer 4th Year Extended Warranty
023-00014	AC2 Series 3rd Year Extended Warranty**
023-00022	AC9 Series 2nd Year Extended Warranty*
023-00007	AC4 Series 2nd Year Extended Warranty*
023-00023	AC9 Series 3rd Year Extended Warranty* *
023-00008	AC4 Series 3rd Year Extended Warranty**
023-00025	AC5 Series 2nd Year Extended Warranty*
023-00009	AC7 Series 2nd Year Extended Warranty*
023-00026	AC5 Series 3rd Year Extended Warranty**



* Currently the AC Series includes two years or 10,000 hours warranty (whichever comes first) on the LED modules and one year on the remainder of the head; AC Series second year warranty provides a full two years / 10,000 hours on a complete LED head.

** AC Series third year includes three years or 15,000 hours on a complete LED Head (whichever comes first).



Excelitas Representatives & Distributors

OmniCure North America Representatives

Connecticut; Maine; Massachusetts; New Hampshire;
New York; Northern NJ; Rhode Island; Vermont;
Eastern Canada; Ontario Canada

TTG Thomas Technology Group
6 Alexander Circle
Marblehead, MA 01945
Tel: 781-639-0715
Fax: 781-639-2070
sales@thomastec.com

Delaware; Dist. Of Columbia; Maryland; Ohio; Pennsylvania; Southern New Jersey; Virginia; West Virginia

Inpro Technologies, Inc.
5112 Pegasus Ct Suite Q
Frederick, MD 21704
Tel.: +1 301 698-9711
inpro@inprotechnologies.com

Alabama; Georgia; North Carolina; South Carolina; Tennessee

EMS Associates
299 Lewis Mustian Rd
Norlina, NC 27563
Tel.: 704-576-2236
eseagrave@mindspring.com

Florida

Sun State Sales LLC
4501 Manatee Ave. W. #164
Bradenton, FL 34209
Tel.: 941-721-3500

Tom Rovnak cell: +1 941-713-8300 Nathan
Rovnak cell: +1 941-713-1397
www.sunstatesales.net

Illinois; Indiana; Michigan; Wisconsin

Excelitas Canada Inc.
2260 Argentia Road
Mississauga ON L5N6H7
Canada
Tel.: (+1) 905-821-2600
Toll Free: (+1) 800-668-8752

Iowa; Minnesota; North Dakota;
Northern Wisconsin; South Dakota

Production Automation Corp (PAC)
6200 Bury Drive.
Eden Prairie, MN 55346
Tel.: +1 952 903-0333
info@gotopac.com

Nevada; Northern California; Oregon; Washington; British Columbia, Canada

Tom Ridino
Tel: 415-297-0066
tom.ridino@excelitas.com

Alaska; Hawaii; Kansas; Kentucky; Mississippi; Missouri; Montana; Nebraska; Wyoming; Brazil (South America)

Excelitas Technologies
2260 Argentia Road
Mississauga, ON L5N 6H7
Tel: +1 905 821-2600
omnicure@excelitas.com

Arizona; Colorado; New Mexico; Southern California; Utah; Baja, Mexico

Full Spectrum Technologies
63 Via Pico Plaza
San Clemente, CA 92672
Tel.: +1 949 502-7733
Rick@fullspectech.com

Arkansas; Louisiana; Oklahoma; Texas;
Texas Valley (Mexico border)

Anton & Associates
4115 Mesa Drive
Denton, TX 76207
Tel.: +1 940-484-7037
mail@antonassoc.com

Costa Rica; Dominican Republic; Puerto Rico
IDS
Complejo Flexipark, Bodega C08 Calle Potrerillos
Alajuela, 20108
CRI-COSTA RICA

El Paso, Texas; Mexico

Hitech Automation
8330 White Road,
El Paso, TX, USA 79907
Tel: +1 915 860-2072 or 915-920-9989
Javier8a@mac.com

OmniCure European Distributors

Belgium; Luxembourg; The Netherlands

Epoxy Technology Europe SRL (BeNeLux)
4 Rue Altiero Spinelli
1400 Nivelles
Belgium

Tel.: +32 2 351 1800 info.
be@epotekeurope.com

OmniCure European Distributors

Czech Republic and Slovakia

PROFiber Networking s.r.o.
Mezi Vodami 205/29
143 00 Praha 4
Czech Republic
Tel: + 420 225 152 050
info@profiber.eu

France

Bureau commercial FDS en France
25 rue des Trois Sœurs
FR-74600 Seynod
France
Tel.: +33 4 58 00 10 07
contact@uv-industrie.com

Poly Dispensing Systems
122, Chemin de la Cavée
Orgeval, 78630
France
Tel.: +33 01 39 62 40 92

Austria and Germany

IGB-tech GmbH
Hauptstraße 71
67159 Friedelsheim
Germany
+49 6322 949 5787
mailto:anfragen@igb-tech.de

Polytec GmbH
Polytec-Platz 1-7
Waldbronn, 76337
Germany
Tel: +49 7243 604 1540
ot@polytec.de

Israel

Memcom Advanced Communications Ltd.
PO Box 23139 Jerusalem 91230
Israel
Tel.: +972 2 5862224
sales@memcom.co.il

Italy

Guido Ammirata Srl.
Via Marocco, 13
Milano, 20127
Italy
Tel: +39 02 28 20 646
info@ammirata.it

Poland

AMB Technic Dispensing Solutions Sp. z o.o.
ul. Zakładowa 15
62-600 Kolo
Poland
Tel: +48 63 2616 267
amb@amb.pl

Baltic and Scandinavia

Efsen UV & EB Technology
Skovlytoften 33
2840 Holte
Denmark
Tel.: +45 45 65 02 60
efsen@efsen.dk

Liechtenstein and Switzerland

Fast Drying Systems (FDS) SA
Chemin Terroux 21
CH-1218 Grand-Saconnex / GE
Suisse
Tel.: +41 22 788 84 88 con-
tact@uv-industrie.com

Ireland and United Kingdom

Jenton International LTD.
9/10 Ardglan Industrial Estate
Ardglan Road, Whitechurch
Hampshire RG28 7BB
United Kingdom
Tel.: +44 125 689 2194
sales@jenton.co.uk

For All Other European Regions, please contact:

Excelitas Technologies
Jörg Hannig
Tel.: +49 (89) 255 458 754
Joerg.Hannig@excelitas.com

OmniCure Australia Distributors

New Zealand

Alpha Services PTY LTD
Tel.: +61 2 9449 2929
adam@alphauv.com.au

OmniCure Asia Support

Excelitas Technologies
Office 818, Enterprise Square.
No.228, Meiyuan Rd.
Zhabei District, 200070,
Shanghai, China
Tel.: (86)2163815578 om-
nicure@excelitas.com



About Excelitas Technologies

Excelitas is a leading provider of advanced, life-enriching technologies that make a difference, serving global market leaders in the life sciences, advanced industrial, next-generation semiconductor and avionics end markets. Headquartered in Pittsburgh, PA, USA, Excelitas is an essential partner in the design, development and manufacture of advanced technologies, offering leading-edge innovation in sensing, detection, imaging, optics and specialty illumination for customers worldwide.

Excelitas is at the forefront of addressing many of the relevant megatrends impacting the world today, including precision medicine, industrial automation, artificial intelligence, and connected devices (IoT).



USA and CAN
(+1) 800-668-8752

[excelitas.com](https://www.excelitas.com)

Europe
(+49) 551-6935-0

Asia/Pacific
(+65) 6499-7777

For a complete listing of our global offices, visit www.excelitas.com/locations

© 2025 Excelitas Technologies Corp.

OmniCure® is a registered trademark. The Excelitas logo and design are registered trademarks of Excelitas Technologies Corp. Excelitas reserves the right to change this document at any time without notice and disclaims liability for editorial, pictorial or typographical errors.

OmniCure UV Curing Catalog_2025.11